

Barevné odstíny



NAJDI SVŮJ BAREVNÝ ODSTÍN

Hledáte vhodné barevné odstíny pro oživení fasády nebo doladění interiéru? Vnitřní barvy, venkovní nátěry a tenkovrstvé omítky jsou tónované podle barvicího systému Najdi svoji barvu - moderního systému, který spočívá v přesném dávkování vysoce kvalitních pigmentových past do vybraného produktu pomocí speciálního zařízení. Zákazník si může vybrat z několika tisíc barevných odstínů z různých druhů vzorníků barev, zvolený barevný odstín se namíchá v požadovaném množství na počkání.

Pro usnadnění výběru jsme pro Vás připravili virtuální vzorník barev. Při volbě barvy musíme brát v úvahu vliv světelných podmínek, struktury a lesku povrchu na její vnímání. Myslete i na to, jak bude vaše barva ladit s okolními budovami a prostředím. Věříme, že najdete požadovaný barevný odstín.

VZORNÍK BAREV

Vzorník POLYTEX obsahuje paletu 1028 odstínů. Jsou seřazeny do šesti řad podle sytosti, což usnadňuje volbu barevných kombinací pro optimální ztvárnění fasád a interiérů. Osobitý důraz je kladen pro výběr 690 barevných odstínů určených do exteriéru, které jsou formulovány z přírodních - anorganických pigmentů nejvyšší kvality. Barevné odstíny si můžete prohlédnout v níže uvedené tabulce. Každému odstínu přísluší jeden řádek. Za názvem barevného odstínu (např. A25-A) je uvedena postupně skupina odstínů podle saturace (např. BRIGHT), cenová skupina odstínu pro tónování barev a omítek určených do interiéru (A, B, C, D, E) a exteriéru (1, 2, 3, 4, 5) a hodnota odrazivosti barevného odstínu (vyjadřuje, kolik procent slunečního záření je barevný odstín schopen odrazit zpět do prostoru).

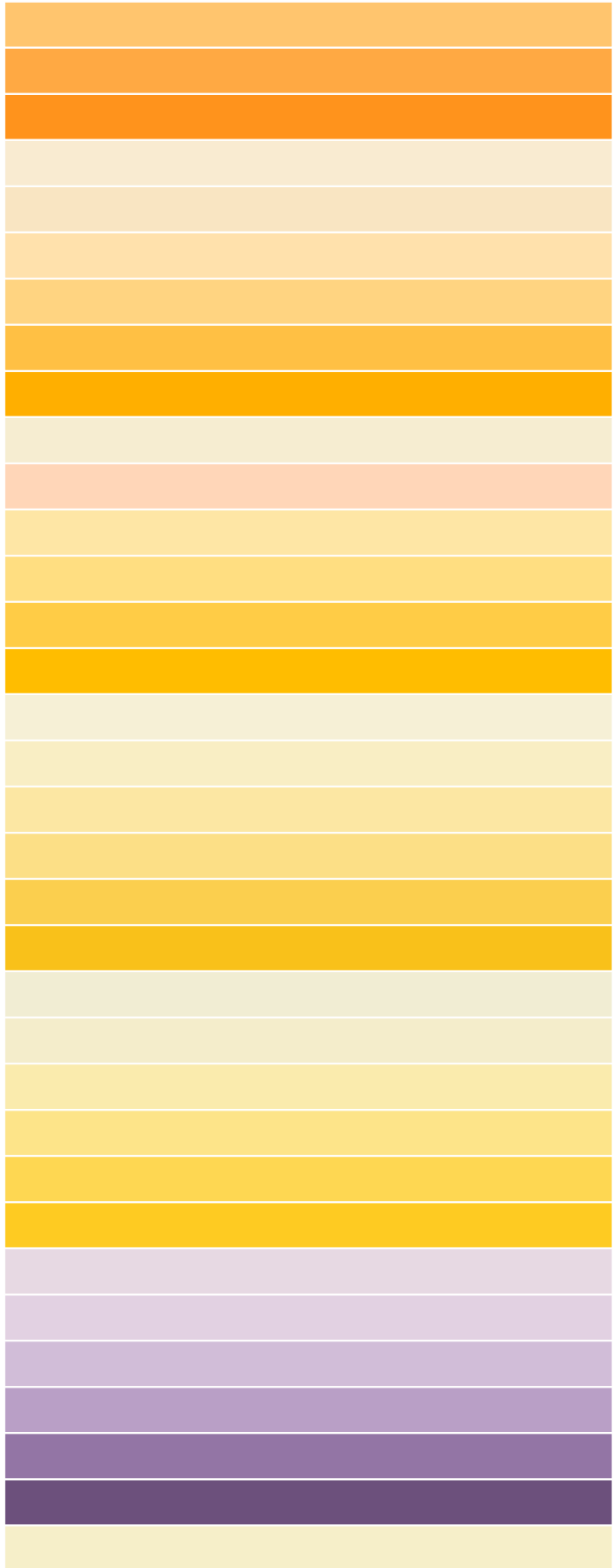
Pokud se nachází ve cenové skupině místo čísel 1-5 tečka ●, znamená to, že daný odstín není možné namíchat z přírodních, vysoce fotorezistivních pigmentů a proto se nedoporučuje pro použití v exteriéru.

Příplatky za tónování - dle kalkulace prodejce.

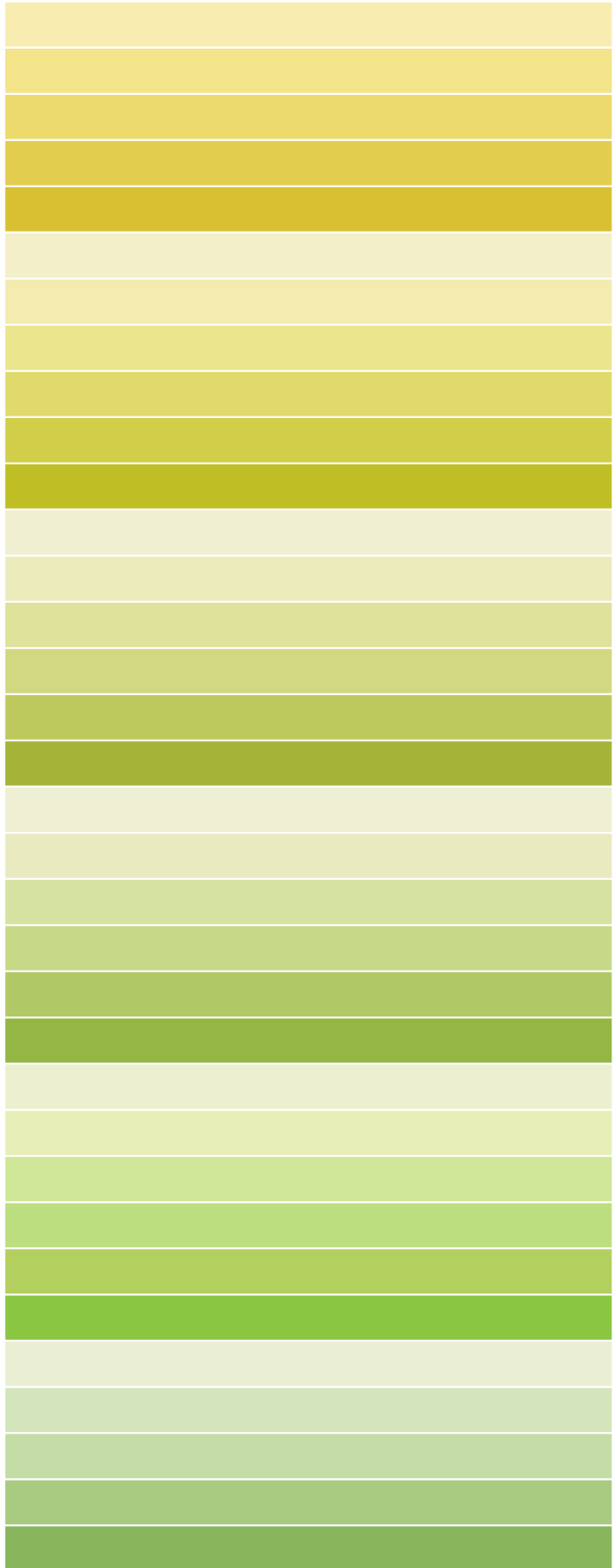
ODSTÍN SKUPINA CENOVÁ SKUPINA ODRAZIVOST

ODSTÍN	SKUPINA	CENOVÁ SKUPINA	ODRAZIVOST
A10-A	BRIGHT	A 1	81
A10-B	BRIGHT	A 1	78
A10-C	BRIGHT	C •	69
A10-D	BRIGHT	E •	57
A10-E	BRIGHT	E •	43
A10-F	BRIGHT	E •	32
A11-A	BRIGHT	A 1	83
A11-B	BRIGHT	A 1	81
A11-C	BRIGHT	C •	72
A11-D	BRIGHT	C •	60
A11-E	BRIGHT	E •	46
A11-F	BRIGHT	E •	35
A12-A	BRIGHT	A 1	84
A12-B	BRIGHT	A 1	79
A12-C	BRIGHT	B 1	73
A12-D	BRIGHT	E •	61
A12-E	BRIGHT	E •	47
A12-F	BRIGHT	E •	39
A13-A	BRIGHT	A 1	85
A13-B	BRIGHT	A 1	78
A13-C	BRIGHT	C •	69
A13-D	BRIGHT	D •	55
A13-E	BRIGHT	E •	42
A13-F	BRIGHT	E •	34
A14-A	BRIGHT	A 1	83
A14-B	BRIGHT	A 1	79
A14-C	BRIGHT	C •	71
A14-D	BRIGHT	C •	62
A14-E	BRIGHT	E •	52
A14-F	BRIGHT	E •	39
A15-A	BRIGHT	A 1	83
A15-B	BRIGHT	B 1	81
A15-C	BRIGHT	B •	76

A15-D	BRIGHT	D •	65
A15-E	BRIGHT	E •	51
A15-F	BRIGHT	E •	43
A16-A	BRIGHT	A 1	84
A16-B	BRIGHT	A 1	80
A16-C	BRIGHT	C •	79
A16-D	BRIGHT	E •	72
A16-E	BRIGHT	E •	62
A16-F	BRIGHT	E •	55
A17-A	BRIGHT	A 1	85
A17-B	BRIGHT	A 2	73
A17-C	BRIGHT	C 3	80
A17-D	BRIGHT	D •	76
A17-E	BRIGHT	E •	65
A17-F	BRIGHT	E •	58
A18-A	BRIGHT	A 1	87
A18-B	BRIGHT	A 2	85
A18-C	BRIGHT	C 4	81
A18-D	BRIGHT	C 5	75
A18-E	BRIGHT	E 5	66
A18-F	BRIGHT	E •	58
A19-A	BRIGHT	A 1	84
A19-B	BRIGHT	A 1	84
A19-C	BRIGHT	B 3	83
A19-D	BRIGHT	D 5	78
A19-E	BRIGHT	E 5	71
A19-F	BRIGHT	E •	64
A1-A	BRIGHT	A •	72
A1-B	BRIGHT	A •	67
A1-C	BRIGHT	A •	55
A1-D	BRIGHT	C •	39
A1-E	BRIGHT	E •	22
A1-F	BRIGHT	E •	10
A20-A	BRIGHT	A 1	86

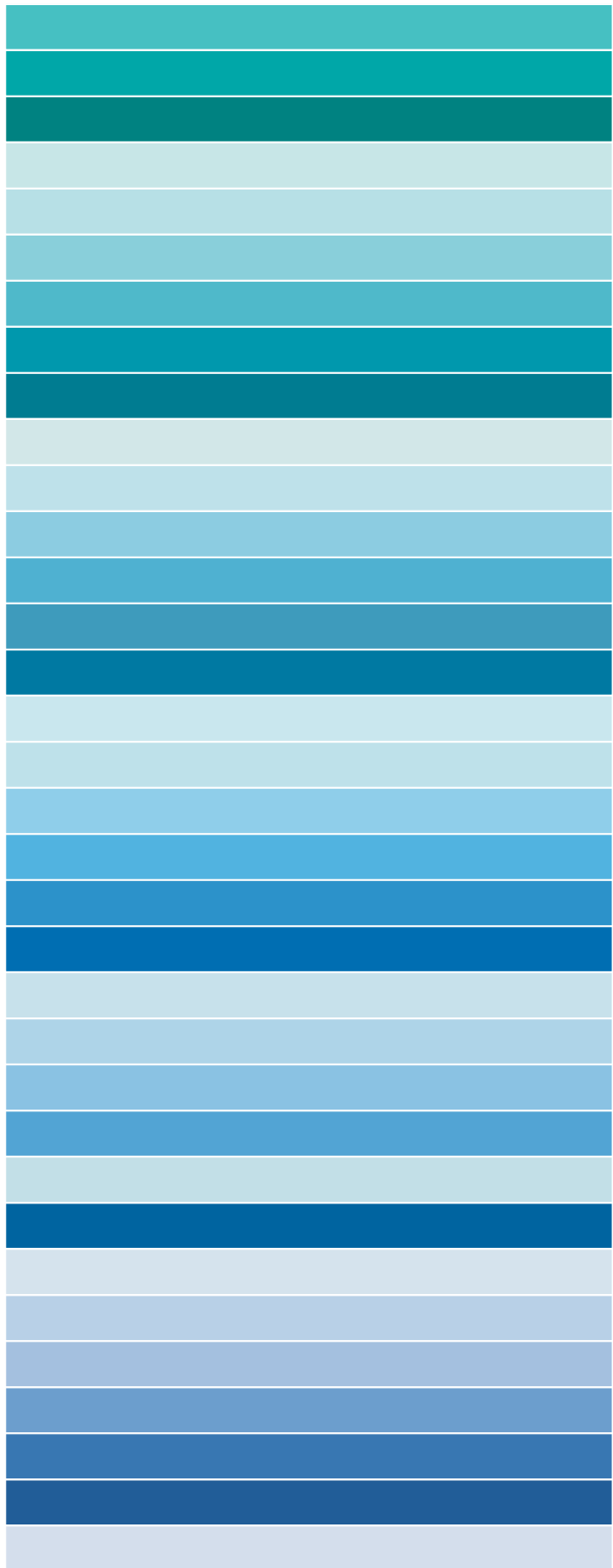


A20-B	BRIGHT	B 3	83
A20-C	BRIGHT	D 5	76
A20-D	BRIGHT	E 5	69
A20-E	BRIGHT	E 5	60
A20-F	BRIGHT	E 5	52
A21-A	BRIGHT	A 2	85
A21-B	BRIGHT	B 3	81
A21-C	BRIGHT	D 5	75
A21-D	BRIGHT	E 5	67
A21-E	BRIGHT	E •	58
A21-F	BRIGHT	E •	48
A22-A	BRIGHT	A 1	85
A22-B	BRIGHT	A 2	81
A22-C	BRIGHT	B 4	72
A22-D	BRIGHT	D 5	64
A22-E	BRIGHT	E 5	54
A22-F	BRIGHT	E •	41
A23-A	BRIGHT	A 1	85
A23-B	BRIGHT	A 2	80
A23-C	BRIGHT	C 4	71
A23-D	BRIGHT	D 5	63
A23-E	BRIGHT	E 5	52
A23-F	BRIGHT	E 5	40
A24-A	BRIGHT	A 1	85
A24-B	BRIGHT	B 3	82
A24-C	BRIGHT	D 5	72
A24-D	BRIGHT	E 5	65
A24-E	BRIGHT	E •	55
A24-F	BRIGHT	E •	46
A25-A	BRIGHT	A 1	84
A25-B	BRIGHT	B 3	74
A25-C	BRIGHT	C 4	66
A25-D	BRIGHT	D 5	52
A25-E	BRIGHT	E •	39

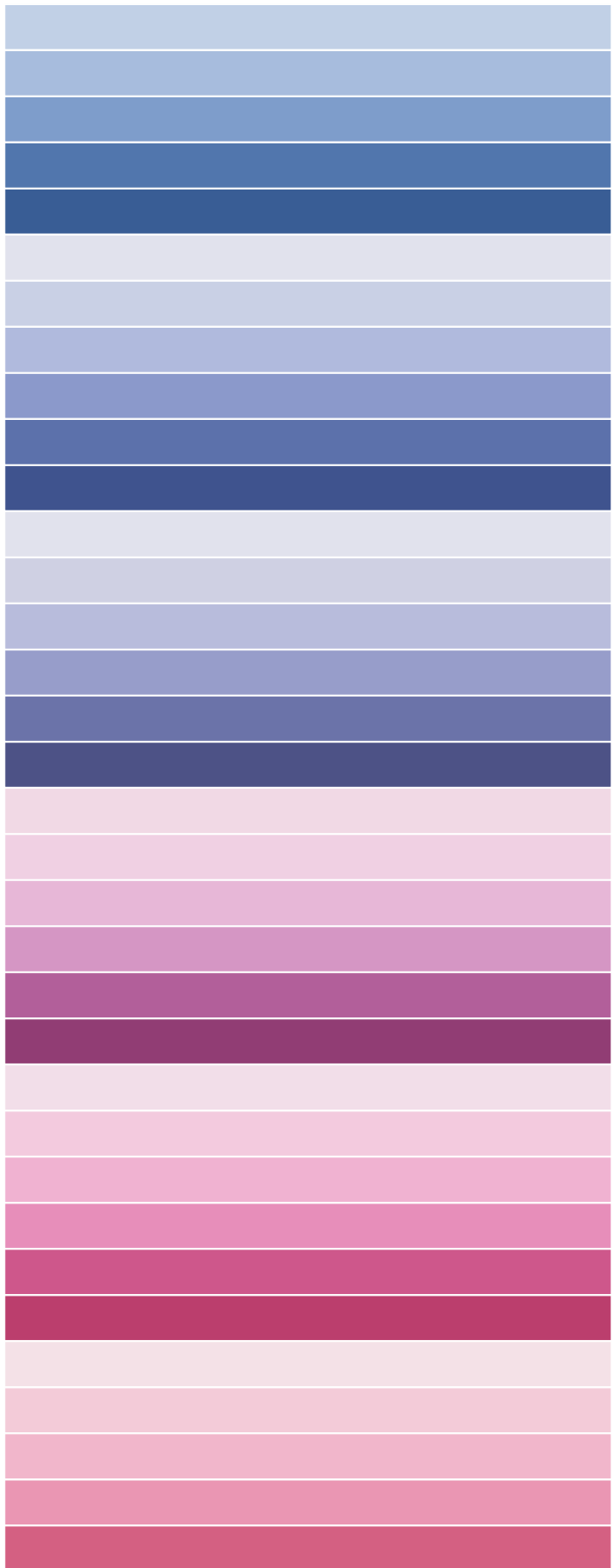


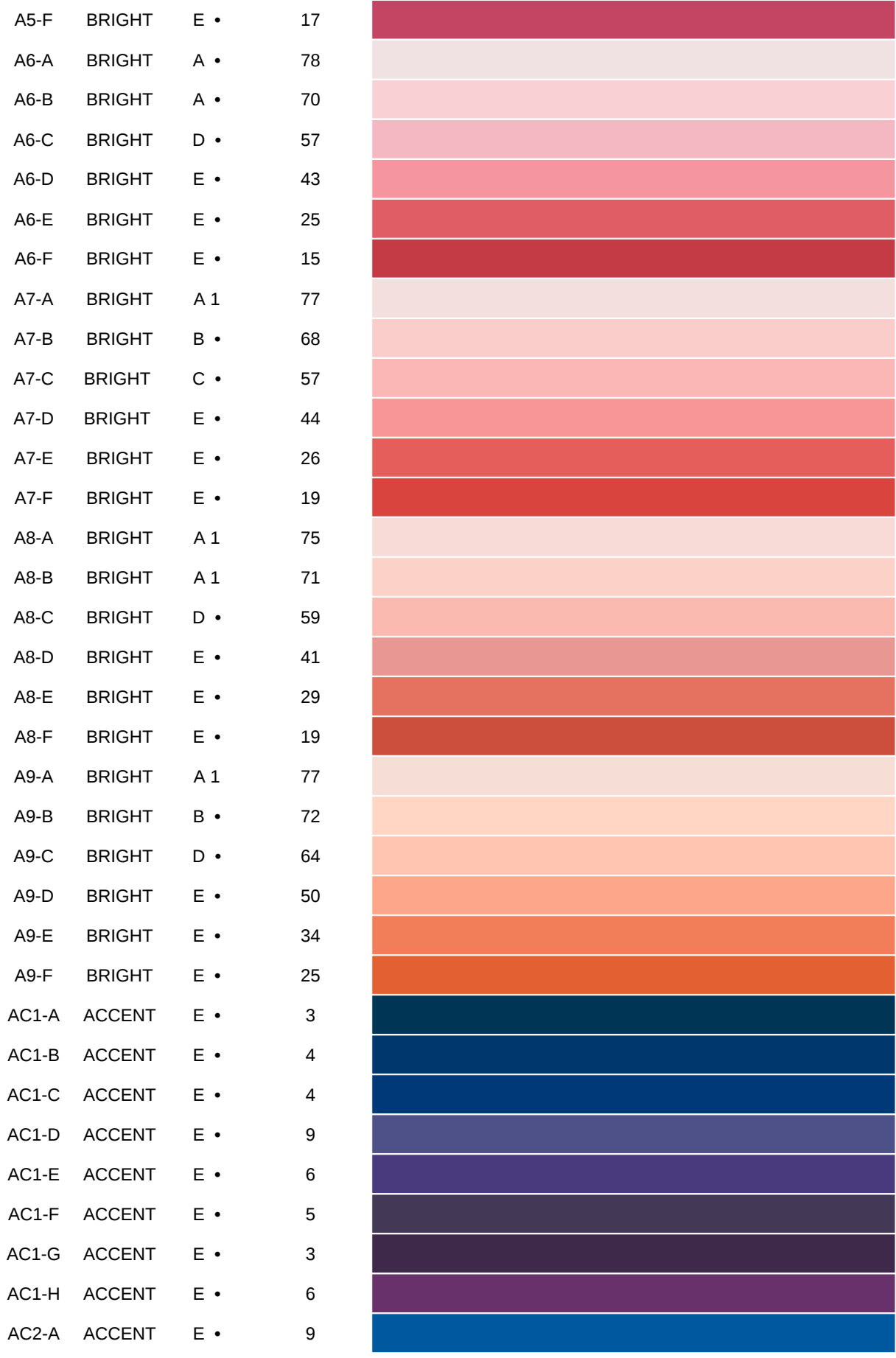
A25-F	BRIGHT	E •	28	
A26-A	BRIGHT	A 2	83	
A26-B	BRIGHT	A 3	76	
A26-C	BRIGHT	C •	64	
A26-D	BRIGHT	E •	56	
A26-E	BRIGHT	E •	33	
A26-F	BRIGHT	E •	26	
A27-A	BRIGHT	A 1	83	
A27-B	BRIGHT	A 3	78	
A27-C	BRIGHT	B •	66	
A27-D	BRIGHT	D •	52	
A27-E	BRIGHT	E •	36	
A27-F	BRIGHT	E •	23	
A28-A	BRIGHT	A 2	82	
A28-B	BRIGHT	A 3	72	
A28-C	BRIGHT	B •	64	
A28-D	BRIGHT	C •	49	
A28-E	BRIGHT	E •	31	
A28-F	BRIGHT	E 5	18	
A29-A	BRIGHT	A 2	80	
A29-B	BRIGHT	A •	74	
A29-C	BRIGHT	A •	60	
A29-D	BRIGHT	C •	46	
A29-E	BRIGHT	D •	31	
A29-F	BRIGHT	E •	16	
A2-A	BRIGHT	A •	73	
A2-B	BRIGHT	A •	66	
A2-C	BRIGHT	B •	52	
A2-D	BRIGHT	D •	35	
A2-E	BRIGHT	E •	17	
A2-F	BRIGHT	E •	9	
A30-A	BRIGHT	A 2	79	
A30-B	BRIGHT	A •	70	
A30-C	BRIGHT	A •	61	

A30-D	BRIGHT	C •	43
A30-E	BRIGHT	D •	30
A30-F	BRIGHT	E •	16
A31-A	BRIGHT	A 3	75
A31-B	BRIGHT	A •	69
A31-C	BRIGHT	A •	55
A31-D	BRIGHT	B •	40
A31-E	BRIGHT	C •	25
A31-F	BRIGHT	E •	16
A32-A	BRIGHT	A 2	77
A32-B	BRIGHT	A 4	70
A32-C	BRIGHT	A •	54
A32-D	BRIGHT	B •	38
A32-E	BRIGHT	D •	28
A32-F	BRIGHT	E •	16
A33-A	BRIGHT	A 3	76
A33-B	BRIGHT	A 4	70
A33-C	BRIGHT	A •	56
A33-D	BRIGHT	B •	40
A33-E	BRIGHT	C •	25
A33-F	BRIGHT	E •	13
A34-A	BRIGHT	A 3	72
A34-B	BRIGHT	A 4	62
A34-C	BRIGHT	A 5	49
A34-D	BRIGHT	B 5	33
A34-E	BRIGHT	D •	70
A34-F	BRIGHT	E •	11
A35-A	BRIGHT	A 2	75
A35-B	BRIGHT	A 4	61
A35-C	BRIGHT	A •	51
A35-D	BRIGHT	C •	32
A35-E	BRIGHT	D •	17
A35-F	BRIGHT	E •	10
A36-A	BRIGHT	A •	72

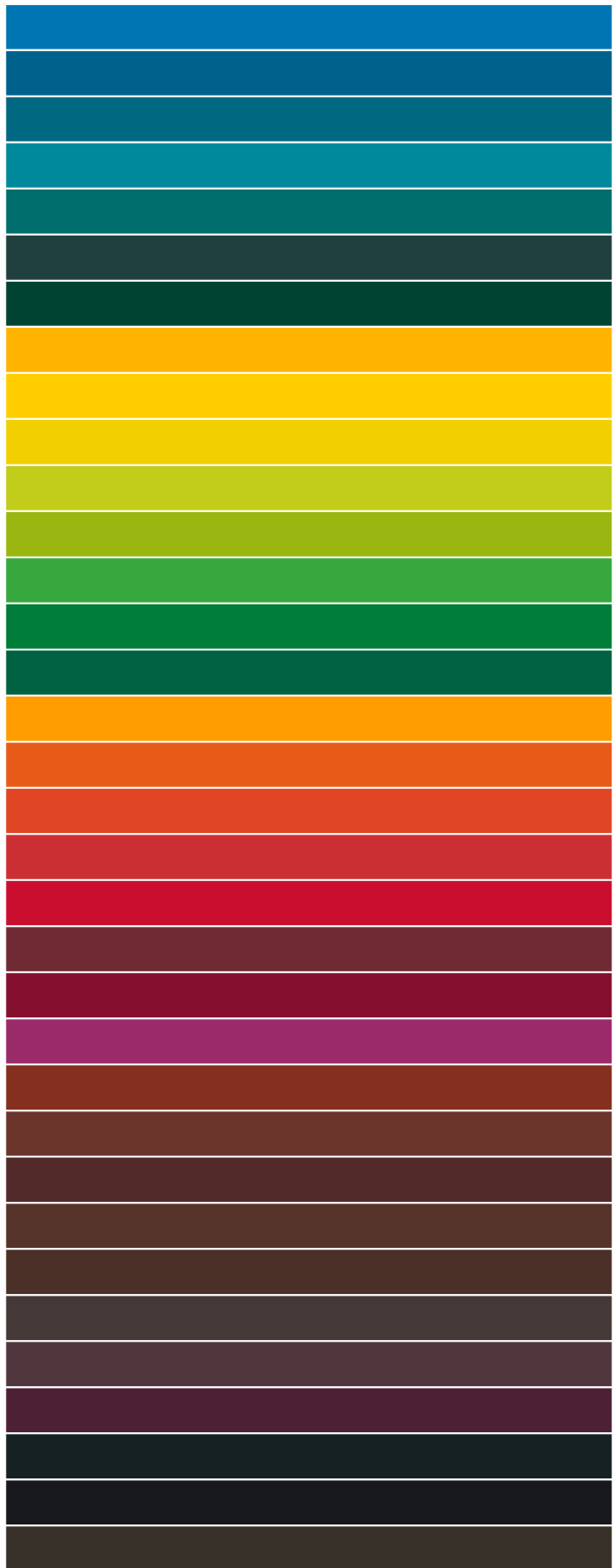


A36-B	BRIGHT	A •	62
A36-C	BRIGHT	A •	49
A36-D	BRIGHT	B •	33
A36-E	BRIGHT	D •	18
A36-F	BRIGHT	E •	11
A37-A	BRIGHT	A •	77
A37-B	BRIGHT	A •	63
A37-C	BRIGHT	A •	50
A37-D	BRIGHT	C •	33
A37-E	BRIGHT	D •	17
A37-F	BRIGHT	E •	9
A38-A	BRIGHT	A •	77
A38-B	BRIGHT	A •	64
A38-C	BRIGHT	A •	51
A38-D	BRIGHT	B •	35
A38-E	BRIGHT	D •	18
A38-F	BRIGHT	E •	9
A3-A	BRIGHT	A •	74
A3-B	BRIGHT	A •	69
A3-C	BRIGHT	B •	56
A3-D	BRIGHT	D •	40
A3-E	BRIGHT	E •	20
A3-F	BRIGHT	E •	11
A4-A	BRIGHT	A •	77
A4-B	BRIGHT	A •	66
A4-C	BRIGHT	C •	55
A4-D	BRIGHT	D •	40
A4-E	BRIGHT	E •	22
A4-F	BRIGHT	E •	15
A5-A	BRIGHT	A •	79
A5-B	BRIGHT	A •	67
A5-C	BRIGHT	C •	56
A5-D	BRIGHT	D •	43
A5-E	BRIGHT	E •	24

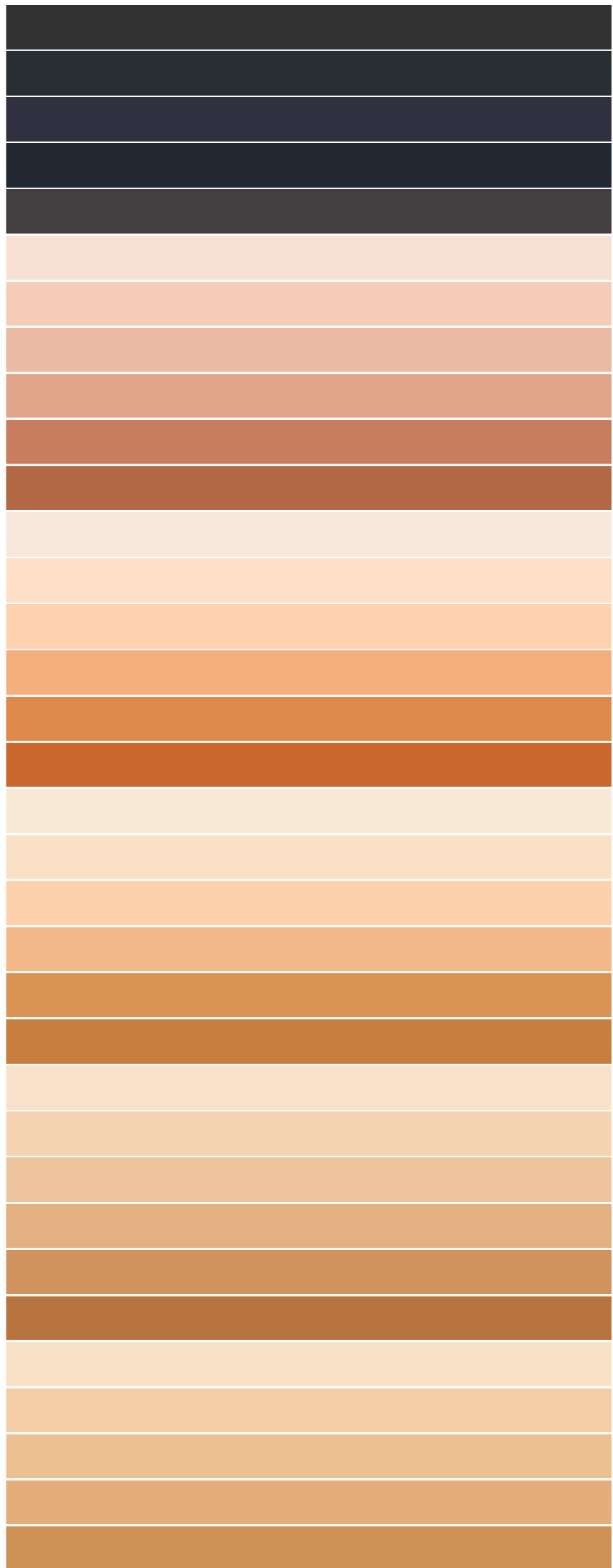




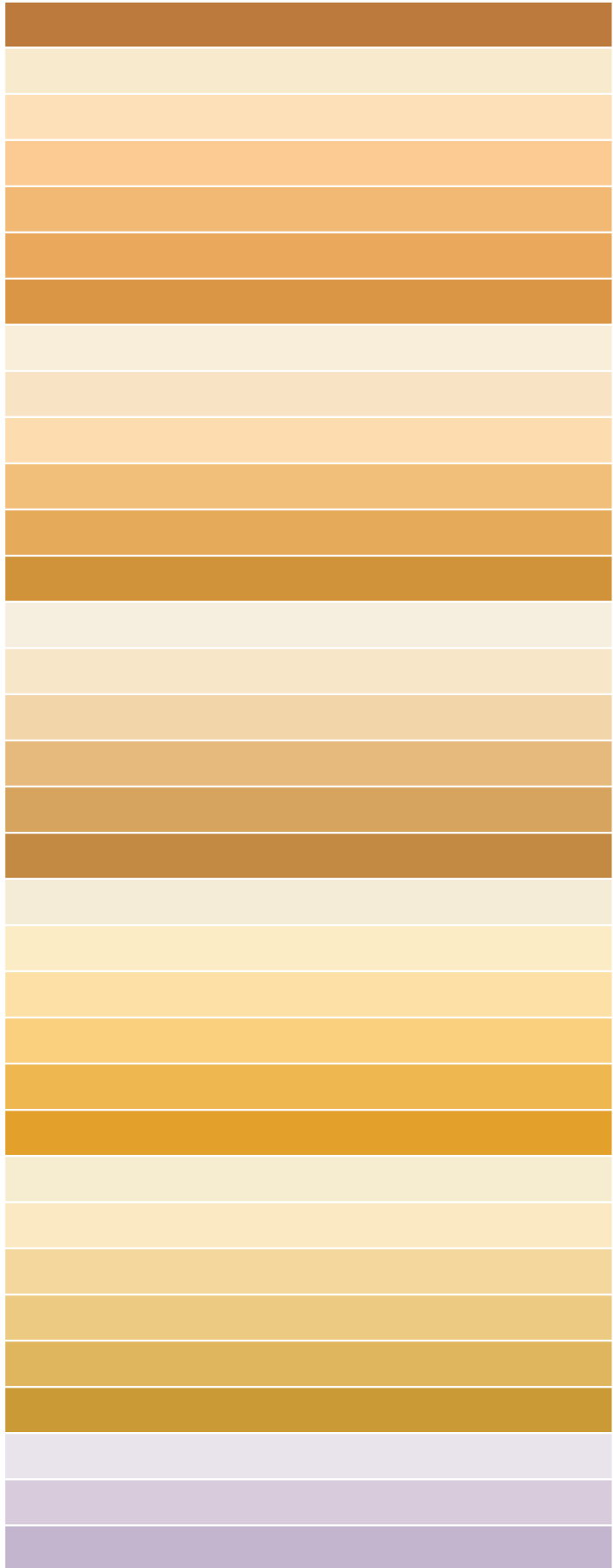
AC2-B	ACCENT	E •	14
AC2-C	ACCENT	E •	9
AC2-D	ACCENT	E •	10
AC2-E	ACCENT	E •	19
AC2-F	ACCENT	E •	11
AC2-G	ACCENT	E •	4
AC2-H	ACCENT	E •	4
AC3-A	ACCENT	E •	56
AC3-B	ACCENT	E •	65
AC3-C	ACCENT	E •	63
AC3-D	ACCENT	E •	55
AC3-E	ACCENT	E •	41
AC3-F	ACCENT	E •	29
AC3-G	ACCENT	E •	14
AC3-H	ACCENT	E •	8
AC4-A	ACCENT	E •	46
AC4-B	ACCENT	E •	24
AC4-C	ACCENT	E •	20
AC4-D	ACCENT	E •	15
AC4-E	ACCENT	E •	13
AC4-F	ACCENT	E •	5
AC4-G	ACCENT	E •	6
AC4-H	ACCENT	E •	10
AC5-A	ACCENT	E •	7
AC5-B	ACCENT	E •	6
AC5-C	ACCENT	E •	4
AC5-D	ACCENT	E •	4
AC5-E	ACCENT	E •	4
AC5-F	ACCENT	D •	4
AC5-G	ACCENT	E •	5
AC5-H	ACCENT	E •	3
AC6-A	ACCENT	E •	1
AC6-B	ACCENT	E •	1
AC6-C	ACCENT	E •	3



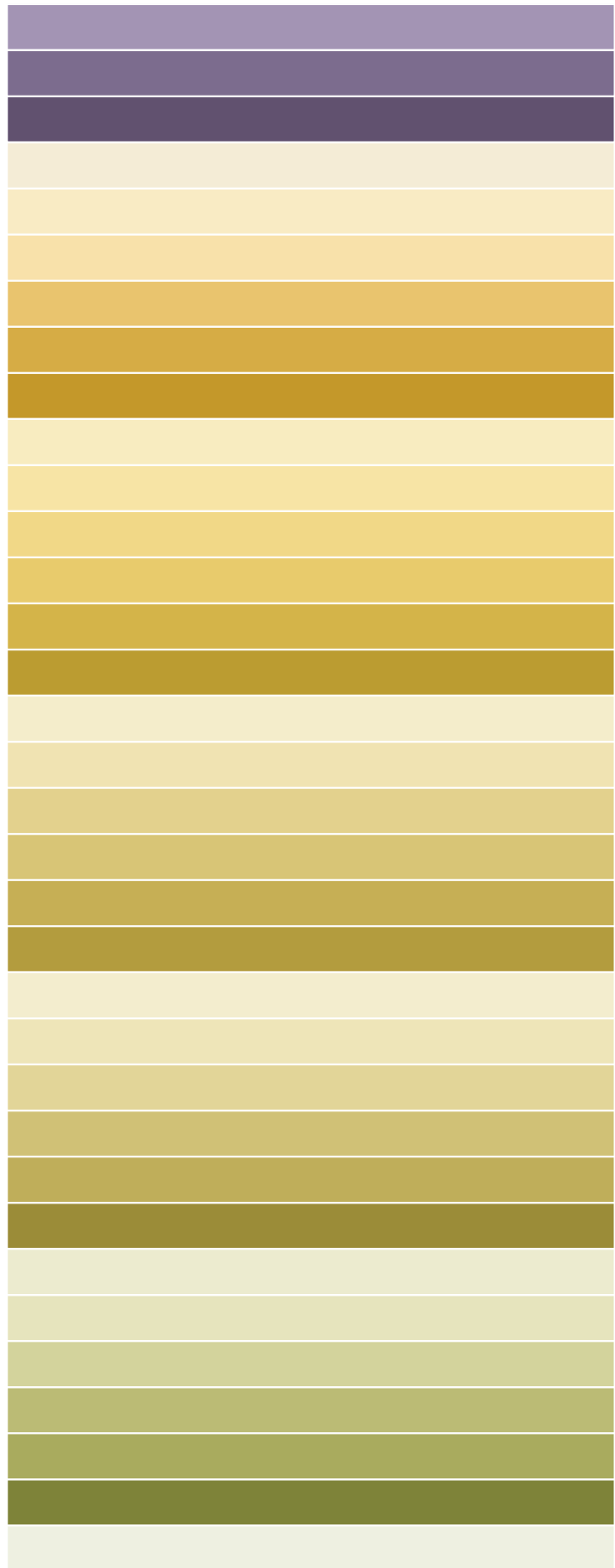
AC6-D	ACCENT	E •	3
AC6-E	ACCENT	E •	3
AC6-F	ACCENT	E •	3
AC6-G	ACCENT	E •	2
AC6-H	ACCENT	E •	5
B10-A	SUNRISE	A 1	78
B10-B	SUNRISE	A 1	66
B10-C	SUNRISE	C 2	55
B10-D	SUNRISE	C 2	45
B10-E	SUNRISE	D 4	28
B10-F	SUNRISE	D 4	20
B11-A	SUNRISE	A 1	83
B11-B	SUNRISE	B 1	78
B11-C	SUNRISE	B 1	70
B11-D	SUNRISE	E •	52
B11-E	SUNRISE	E •	34
B11-F	SUNRISE	E •	23
B12-A	SUNRISE	B 1	83
B12-B	SUNRISE	A 1	78
B12-C	SUNRISE	D 1	69
B12-D	SUNRISE	C 3	55
B12-E	SUNRISE	D 4	36
B12-F	SUNRISE	D 4	27
B13-A	SUNRISE	A 1	78
B13-B	SUNRISE	A 1	69
B13-C	SUNRISE	B 2	60
B13-D	SUNRISE	B 3	49
B13-E	SUNRISE	D 4	35
B13-F	SUNRISE	D 4	23
B14-A	SUNRISE	A 1	78
B14-B	SUNRISE	A 2	65
B14-C	SUNRISE	B 2	58
B14-D	SUNRISE	D 3	48
B14-E	SUNRISE	D 4	34



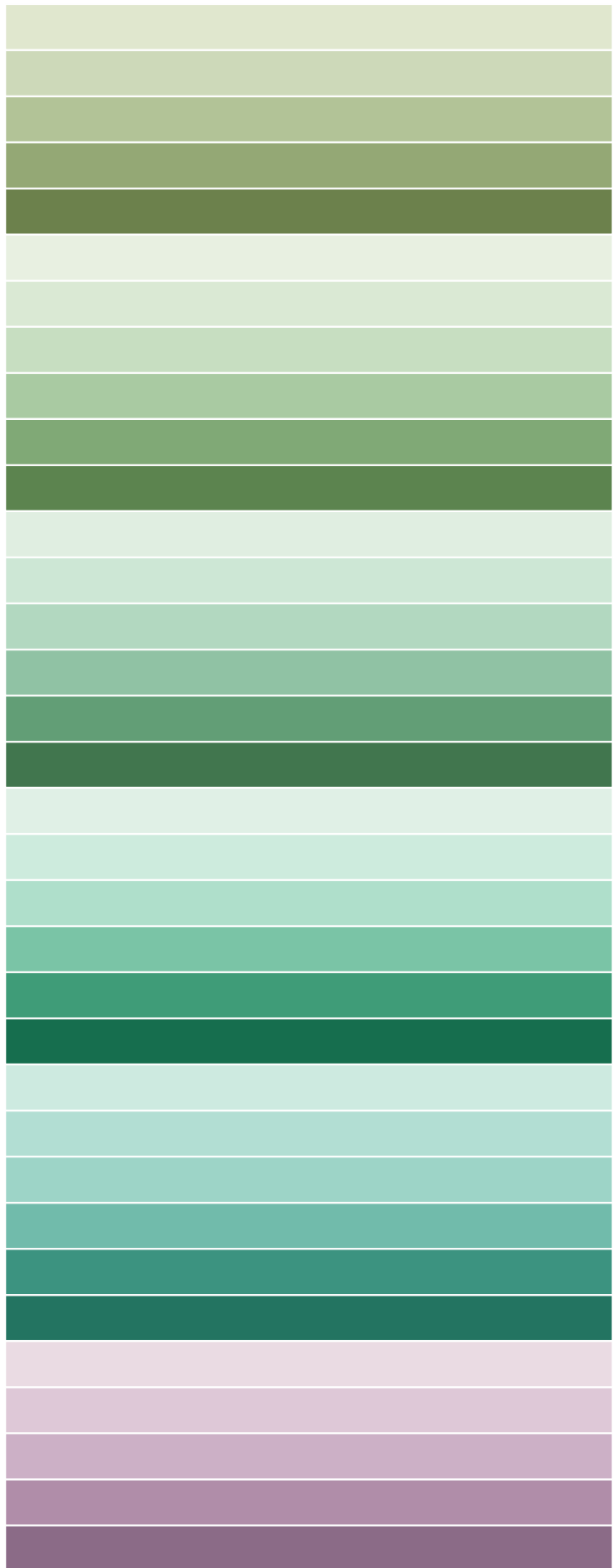
B14-F	SUNRISE	D 4	25
B15-A	SUNRISE	A 1	83
B15-B	SUNRISE	B 1	77
B15-C	SUNRISE	C 2	65
B15-D	SUNRISE	E 4	55
B15-E	SUNRISE	E 4	46
B15-F	SUNRISE	D 4	37
B16-A	SUNRISE	A 1	86
B16-B	SUNRISE	A 1	79
B16-C	SUNRISE	A 1	75
B16-D	SUNRISE	C 3	58
B16-E	SUNRISE	D 4	47
B16-F	SUNRISE	D 4	35
B17-A	SUNRISE	A 1	86
B17-B	SUNRISE	A 1	81
B17-C	SUNRISE	B 1	69
B17-D	SUNRISE	C 3	53
B17-E	SUNRISE	D 4	42
B17-F	SUNRISE	D 4	30
B18-A	SUNRISE	A 1	84
B18-B	SUNRISE	A 1	84
B18-C	SUNRISE	B 3	77
B18-D	SUNRISE	C 5	67
B18-E	SUNRISE	E 5	53
B18-F	SUNRISE	E 5	42
B19-A	SUNRISE	A 1	85
B19-B	SUNRISE	A 1	83
B19-C	SUNRISE	B 3	70
B19-D	SUNRISE	C 4	62
B19-E	SUNRISE	D 5	50
B19-F	SUNRISE	E 5	36
B1-A	SUNRISE	A •	78
B1-B	SUNRISE	A •	62
B1-C	SUNRISE	A •	49



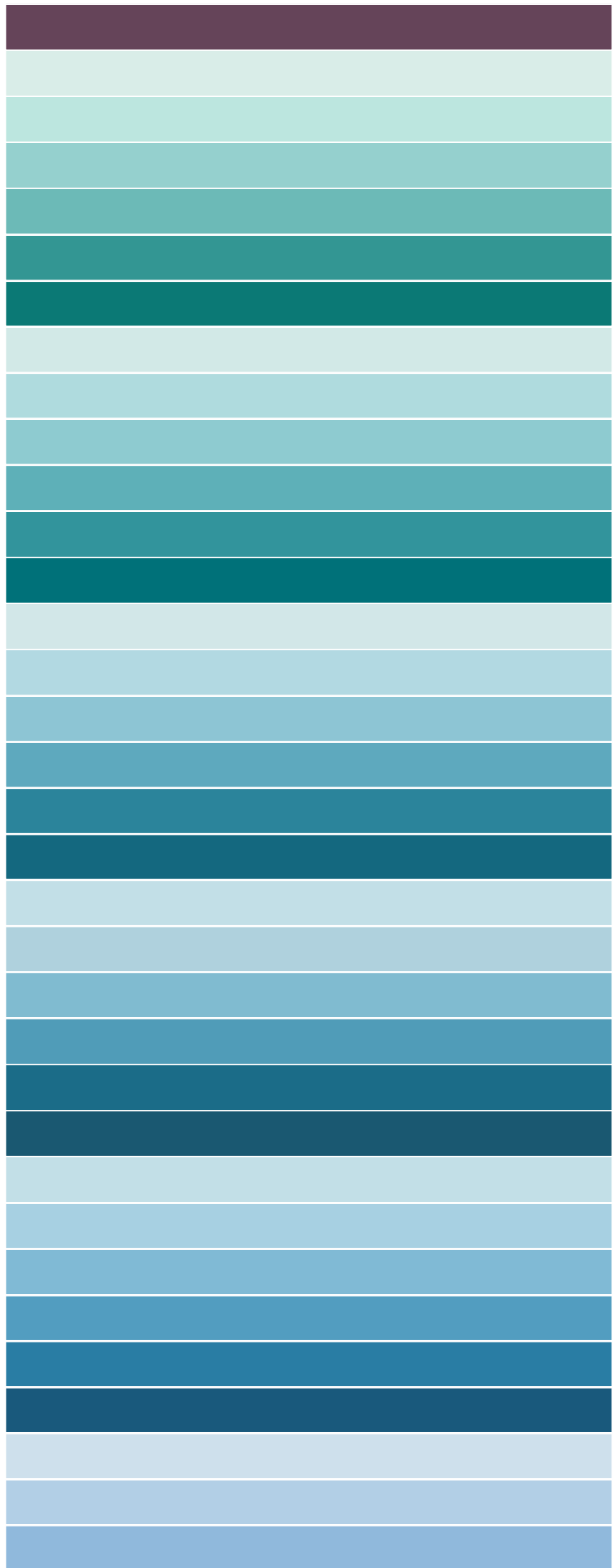
B1-D	SUNRISE	C •	32
B1-E	SUNRISE	D •	17
B1-F	SUNRISE	E •	10
B20-A	SUNRISE	A 1	84
B20-B	SUNRISE	A 1	83
B20-C	SUNRISE	B 3	77
B20-D	SUNRISE	D 5	58
B20-E	SUNRISE	E 5	44
B20-F	SUNRISE	E •	34
B21-A	SUNRISE	A 2	84
B21-B	SUNRISE	C 4	78
B21-C	SUNRISE	D 5	70
B21-D	SUNRISE	E 5	61
B21-E	SUNRISE	E 5	47
B21-F	SUNRISE	E •	35
B22-A	SUNRISE	A 1	84
B22-B	SUNRISE	B 3	77
B22-C	SUNRISE	C 4	64
B22-D	SUNRISE	E 5	56
B22-E	SUNRISE	E 5	43
B22-F	SUNRISE	E 5	34
B23-A	SUNRISE	A 1	84
B23-B	SUNRISE	A 3	78
B23-C	SUNRISE	C 4	66
B23-D	SUNRISE	D 5	53
B23-E	SUNRISE	E 5	42
B23-F	SUNRISE	E •	26
B24-A	SUNRISE	A 1	82
B24-B	SUNRISE	B 2	76
B24-C	SUNRISE	B 4	63
B24-D	SUNRISE	D 5	47
B24-E	SUNRISE	D 5	38
B24-F	SUNRISE	E •	21
B25-A	SUNRISE	A 1	86



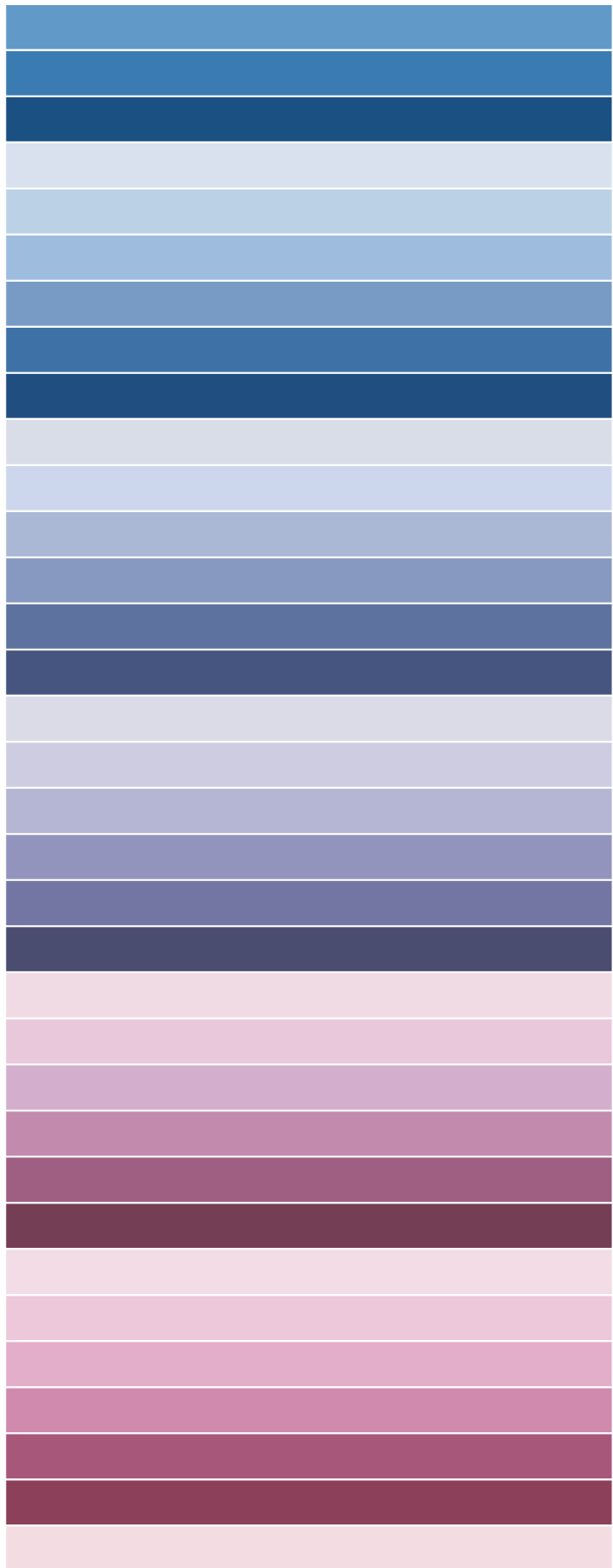
B25-B	SUNRISE	A 1	77
B25-C	SUNRISE	A 3	66
B25-D	SUNRISE	B 4	51
B25-E	SUNRISE	D 5	36
B25-F	SUNRISE	D 5	19
B26-A	SUNRISE	A 1	85
B26-B	SUNRISE	A 2	78
B26-C	SUNRISE	A 3	68
B26-D	SUNRISE	B 5	53
B26-E	SUNRISE	E 5	34
B26-F	SUNRISE	E 5	19
B27-A	SUNRISE	A 1	82
B27-B	SUNRISE	A 3	75
B27-C	SUNRISE	A 4	62
B27-D	SUNRISE	B 5	47
B27-E	SUNRISE	D 5	28
B27-F	SUNRISE	E 5	15
B28-A	SUNRISE	A 1	84
B28-B	SUNRISE	A 3	78
B28-C	SUNRISE	A 4	66
B28-D	SUNRISE	C •	46
B28-E	SUNRISE	D 5	26
B28-F	SUNRISE	E •	12
B29-A	SUNRISE	A 3	77
B29-B	SUNRISE	A 4	67
B29-C	SUNRISE	A 5	58
B29-D	SUNRISE	B 5	42
B29-E	SUNRISE	D 5	24
B29-F	SUNRISE	E 5	14
B2-A	SUNRISE	A •	74
B2-B	SUNRISE	A •	61
B2-C	SUNRISE	B •	48
B2-D	SUNRISE	D •	31
B2-E	SUNRISE	E •	18



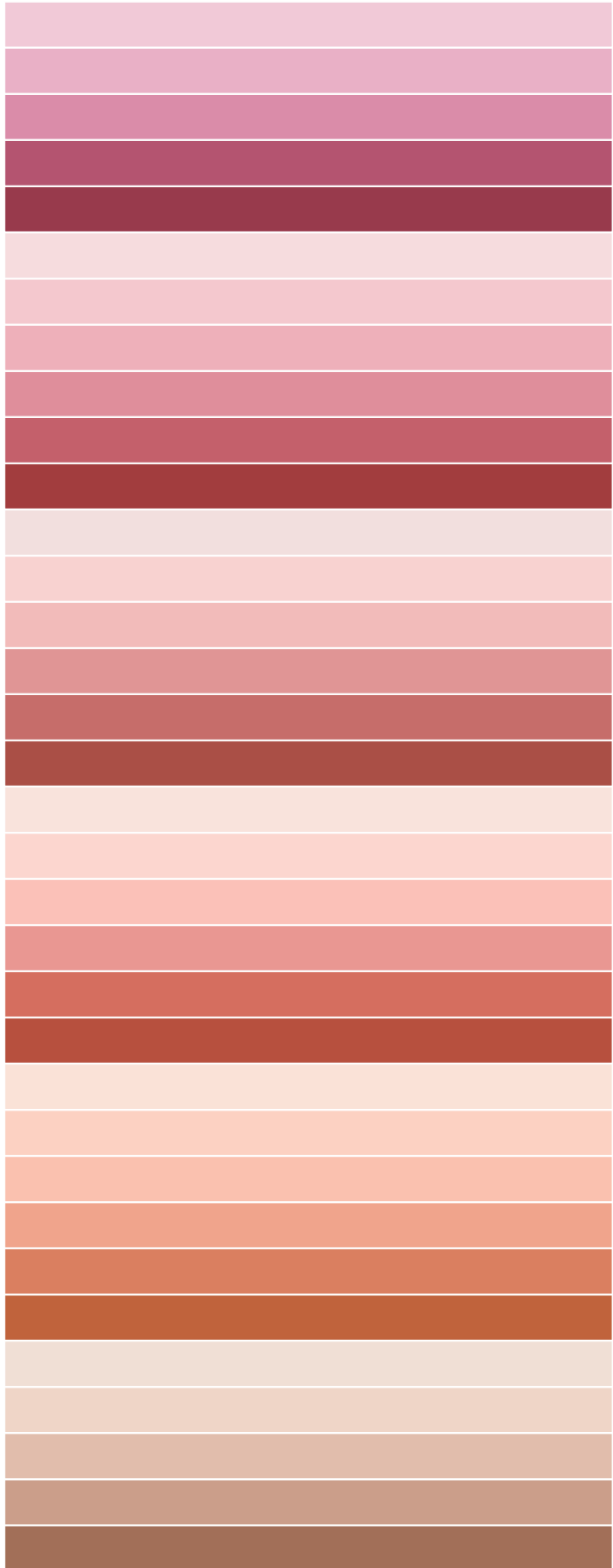
B2-F	SUNRISE	E •	8
B30-A	SUNRISE	A 2	81
B30-B	SUNRISE	A 4	72
B30-C	SUNRISE	A 5	56
B30-D	SUNRISE	B •	42
B30-E	SUNRISE	D •	25
B30-F	SUNRISE	D •	15
B31-A	SUNRISE	A 2	78
B31-B	SUNRISE	A 4	65
B31-C	SUNRISE	A 5	53
B31-D	SUNRISE	B •	37
B31-E	SUNRISE	C •	24
B31-F	SUNRISE	E •	13
B32-A	SUNRISE	A 3	77
B32-B	SUNRISE	A 4	64
B32-C	SUNRISE	A 5	50
B32-D	SUNRISE	B •	34
B32-E	SUNRISE	C •	19
B32-F	SUNRISE	E •	12
B33-A	SUNRISE	A 3	70
B33-B	SUNRISE	A 4	60
B33-C	SUNRISE	A 5	45
B33-D	SUNRISE	B 5	29
B33-E	SUNRISE	D 5	13
B33-F	SUNRISE	E 5	8
B34-A	SUNRISE	A 3	70
B34-B	SUNRISE	A 4	59
B34-C	SUNRISE	A 5	45
B34-D	SUNRISE	C 5	30
B34-E	SUNRISE	D •	18
B34-F	SUNRISE	E 5	9
B35-A	SUNRISE	A 3	73
B35-B	SUNRISE	A 4	60
B35-C	SUNRISE	A •	46



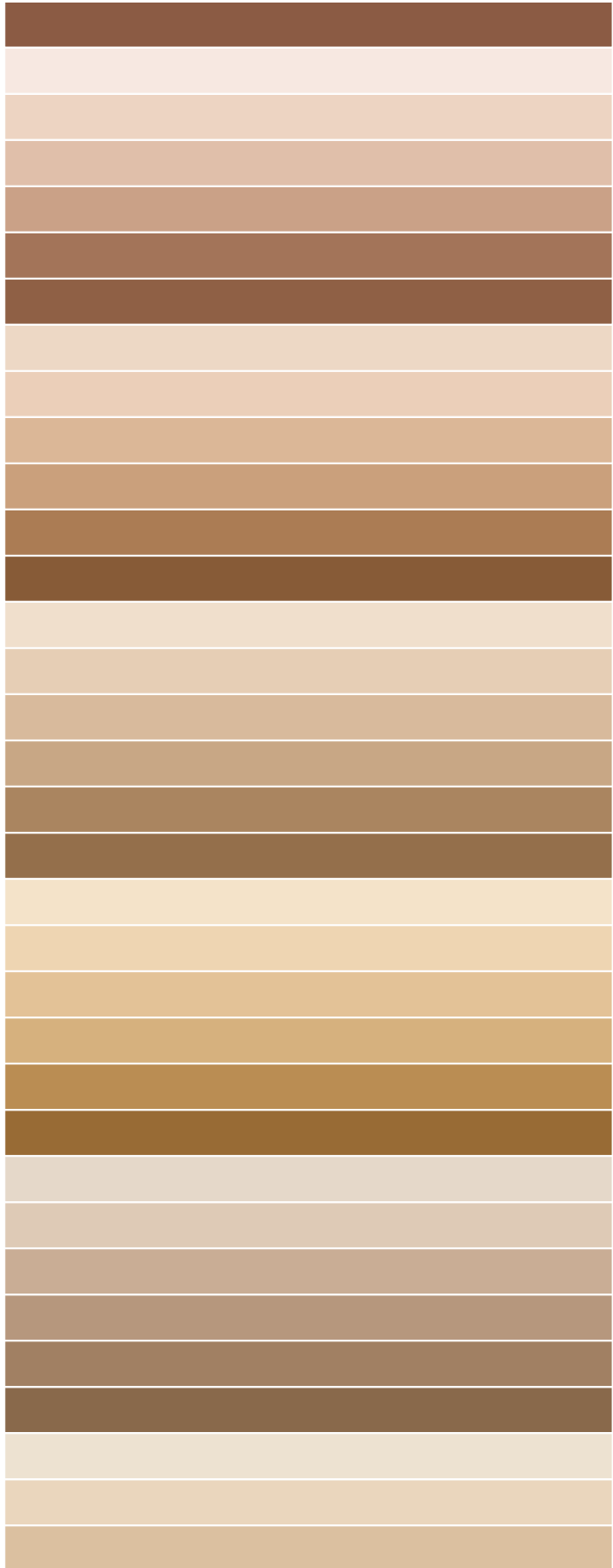
B35-D	SUNRISE	C •	30
B35-E	SUNRISE	D •	18
B35-F	SUNRISE	E •	8
B36-A	SUNRISE	A 2	75
B36-B	SUNRISE	A •	62
B36-C	SUNRISE	A •	48
B36-D	SUNRISE	B •	32
B36-E	SUNRISE	D •	16
B36-F	SUNRISE	E •	7
B37-A	SUNRISE	A 3	72
B37-B	SUNRISE	A •	67
B37-C	SUNRISE	A •	48
B37-D	SUNRISE	C •	32
B37-E	SUNRISE	D •	17
B37-F	SUNRISE	E •	9
B38-A	SUNRISE	A •	71
B38-B	SUNRISE	A •	62
B38-C	SUNRISE	A •	48
B38-D	SUNRISE	C •	31
B38-E	SUNRISE	D •	19
B38-F	SUNRISE	E •	8
B3-A	SUNRISE	A •	75
B3-B	SUNRISE	A •	64
B3-C	SUNRISE	C •	49
B3-D	SUNRISE	D •	33
B3-E	SUNRISE	E •	17
B3-F	SUNRISE	E •	8
B4-A	SUNRISE	A •	76
B4-B	SUNRISE	A •	64
B4-C	SUNRISE	C •	51
B4-D	SUNRISE	D •	34
B4-E	SUNRISE	E •	16
B4-F	SUNRISE	E •	10
B5-A	SUNRISE	A •	76



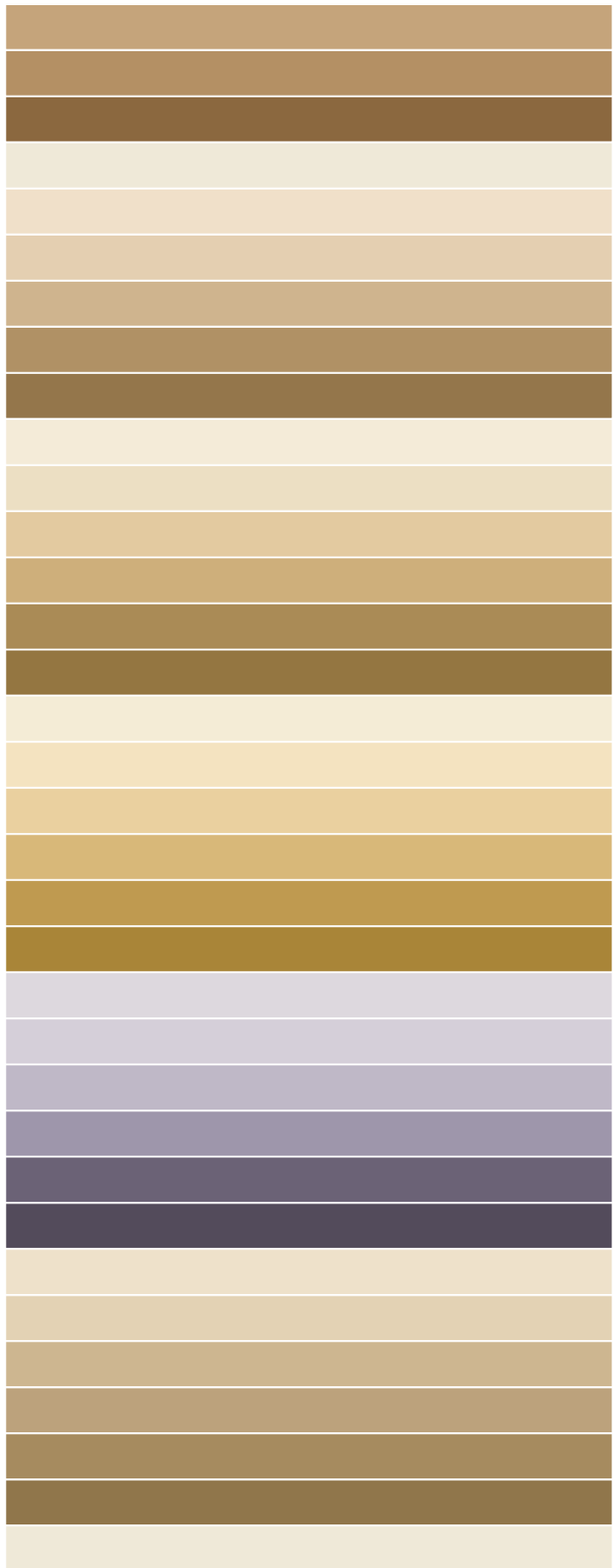
B5-B	SUNRISE	A •	65
B5-C	SUNRISE	C •	53
B5-D	SUNRISE	D •	36
B5-E	SUNRISE	E •	17
B5-F	SUNRISE	E •	10
B6-A	SUNRISE	A •	76
B6-B	SUNRISE	A •	65
B6-C	SUNRISE	C •	53
B6-D	SUNRISE	D •	37
B6-E	SUNRISE	E •	21
B6-F	SUNRISE	E •	11
B7-A	SUNRISE	A 1	77
B7-B	SUNRISE	A •	70
B7-C	SUNRISE	B •	58
B7-D	SUNRISE	E •	39
B7-E	SUNRISE	E •	24
B7-F	SUNRISE	E •	15
B8-A	SUNRISE	A 1	80
B8-B	SUNRISE	A 1	73
B8-C	SUNRISE	C •	62
B8-D	SUNRISE	E •	41
B8-E	SUNRISE	E •	26
B8-F	SUNRISE	E •	16
B9-A	SUNRISE	A 1	80
B9-B	SUNRISE	B 1	70
B9-C	SUNRISE	C •	62
B9-D	SUNRISE	D •	47
B9-E	SUNRISE	E •	31
B9-F	SUNRISE	E •	20
C10-A	M. LIGHT	A 1	76
C10-B	M. LIGHT	A 1	70
C10-C	M. LIGHT	A 1	56
C10-D	M. LIGHT	B 2	39
C10-E	M. LIGHT	D 4	20



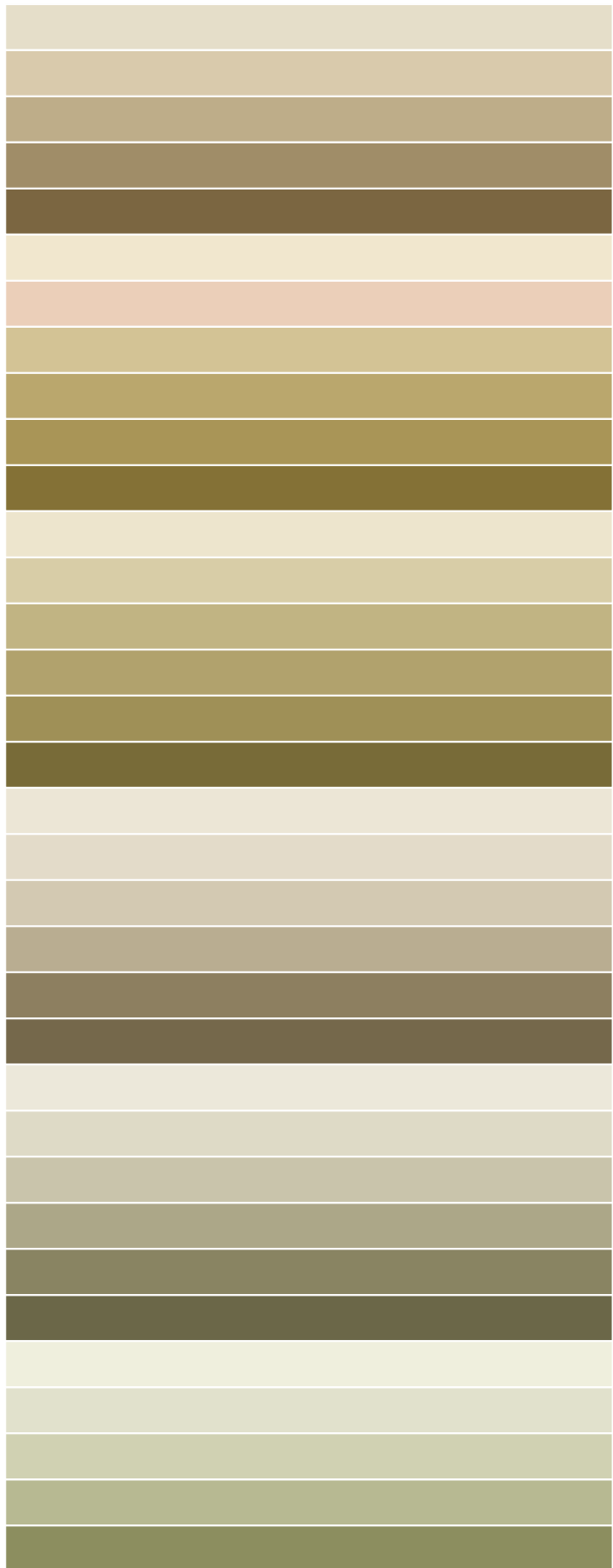
C10-F	M. LIGHT	D 4	13
C11-A	M. LIGHT	A 1	83
C11-B	M. LIGHT	A 1	69
C11-C	M. LIGHT	A 1	56
C11-D	M. LIGHT	C 3	40
C11-E	M. LIGHT	D 4	21
C11-F	M. LIGHT	D 4	15
C12-A	M. LIGHT	A 1	71
C12-B	M. LIGHT	A 1	66
C12-C	M. LIGHT	B 2	51
C12-D	M. LIGHT	C 3	39
C12-E	M. LIGHT	D 4	24
C12-F	M. LIGHT	E 4	13
C13-A	M. LIGHT	A 1	76
C13-B	M. LIGHT	A 1	64
C13-C	M. LIGHT	B 2	52
C13-D	M. LIGHT	C 3	42
C13-E	M. LIGHT	D 4	26
C13-F	M. LIGHT	D 4	18
C14-A	M. LIGHT	A 1	79
C14-B	M. LIGHT	A 1	69
C14-C	M. LIGHT	B 2	57
C14-D	M. LIGHT	C 3	47
C14-E	M. LIGHT	D 4	30
C14-F	M. LIGHT	E 5	17
C15-A	M. LIGHT	A 1	70
C15-B	M. LIGHT	A 1	61
C15-C	M. LIGHT	B 2	45
C15-D	M. LIGHT	C 3	34
C15-E	M. LIGHT	D 4	24
C15-F	M. LIGHT	D 4	16
C16-A	M. LIGHT	A 1	77
C16-B	M. LIGHT	A 1	70
C16-C	M. LIGHT	A 2	55



C16-D	M. LIGHT	C 3	40
C16-E	M. LIGHT	D 4	30
C16-F	M. LIGHT	D 4	16
C17-A	M. LIGHT	A 1	81
C17-B	M. LIGHT	A 1	76
C17-C	M. LIGHT	A 1	64
C17-D	M. LIGHT	B 3	48
C17-E	M. LIGHT	D 4	30
C17-F	M. LIGHT	D 4	20
C18-A	M. LIGHT	A 1	83
C18-B	M. LIGHT	A 1	74
C18-C	M. LIGHT	B 1	61
C18-D	M. LIGHT	C 3	45
C18-E	M. LIGHT	D 4	28
C18-F	M. LIGHT	D 4	20
C19-A	M. LIGHT	A 1	84
C19-B	M. LIGHT	A 1	78
C19-C	M. LIGHT	B 2	65
C19-D	M. LIGHT	D 4	50
C19-E	M. LIGHT	D 5	35
C19-F	M. LIGHT	E 5	25
C1-A	M. LIGHT	A 2	70
C1-B	M. LIGHT	A •	63
C1-C	M. LIGHT	A •	50
C1-D	M. LIGHT	B •	32
C1-E	M. LIGHT	E •	13
C1-F	M. LIGHT	E •	8
C20-A	M. LIGHT	A 1	76
C20-B	M. LIGHT	A 1	66
C20-C	M. LIGHT	B 2	49
C20-D	M. LIGHT	C 5	38
C20-E	M. LIGHT	D 4	27
C20-F	M. LIGHT	D 4	19
C21-A	M. LIGHT	A 1	81



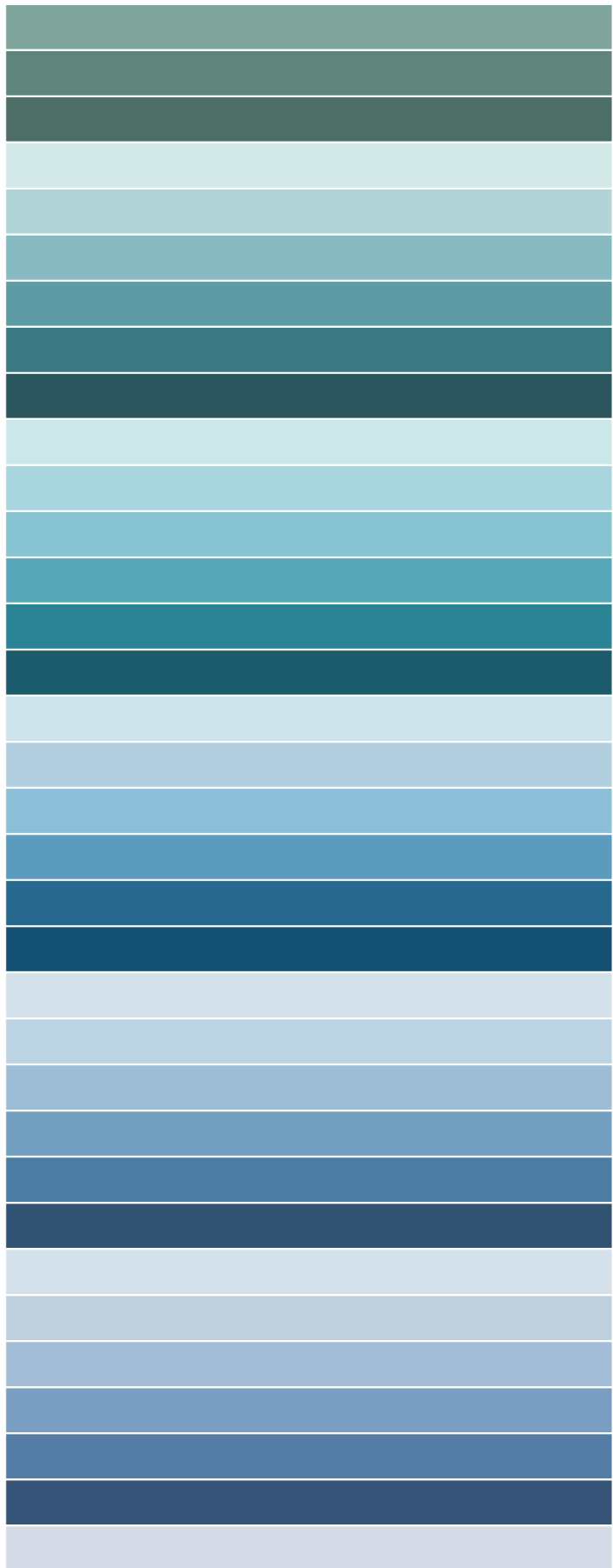
C21-B	M. LIGHT	B 1	73
C21-C	M. LIGHT	A 2	60
C21-D	M. LIGHT	C 3	43
C21-E	M. LIGHT	D 4	28
C21-F	M. LIGHT	D 4	14
C22-A	M. LIGHT	A 1	80
C22-B	M. LIGHT	A 1	66
C22-C	M. LIGHT	B 3	55
C22-D	M. LIGHT	D 4	39
C22-E	M. LIGHT	D 5	31
C22-F	M. LIGHT	E •	17
C23-A	M. LIGHT	A 1	79
C23-B	M. LIGHT	B 2	61
C23-C	M. LIGHT	C 4	46
C23-D	M. LIGHT	D 4	36
C23-E	M. LIGHT	D 5	28
C23-F	M. LIGHT	E •	15
C24-A	M. LIGHT	A 1	79
C24-B	M. LIGHT	A 1	71
C24-C	M. LIGHT	A 1	59
C24-D	M. LIGHT	C 3	42
C24-E	M. LIGHT	D 5	22
C24-F	M. LIGHT	D 4	14
C25-A	M. LIGHT	A 1	81
C25-B	M. LIGHT	A 1	70
C25-C	M. LIGHT	A 2	55
C25-D	M. LIGHT	C 4	38
C25-E	M. LIGHT	D 4	23
C25-F	M. LIGHT	D 5	13
C26-A	M. LIGHT	A 1	85
C26-B	M. LIGHT	A 1	74
C26-C	M. LIGHT	A 2	62
C26-D	M. LIGHT	B 4	47
C26-E	M. LIGHT	D 5	26



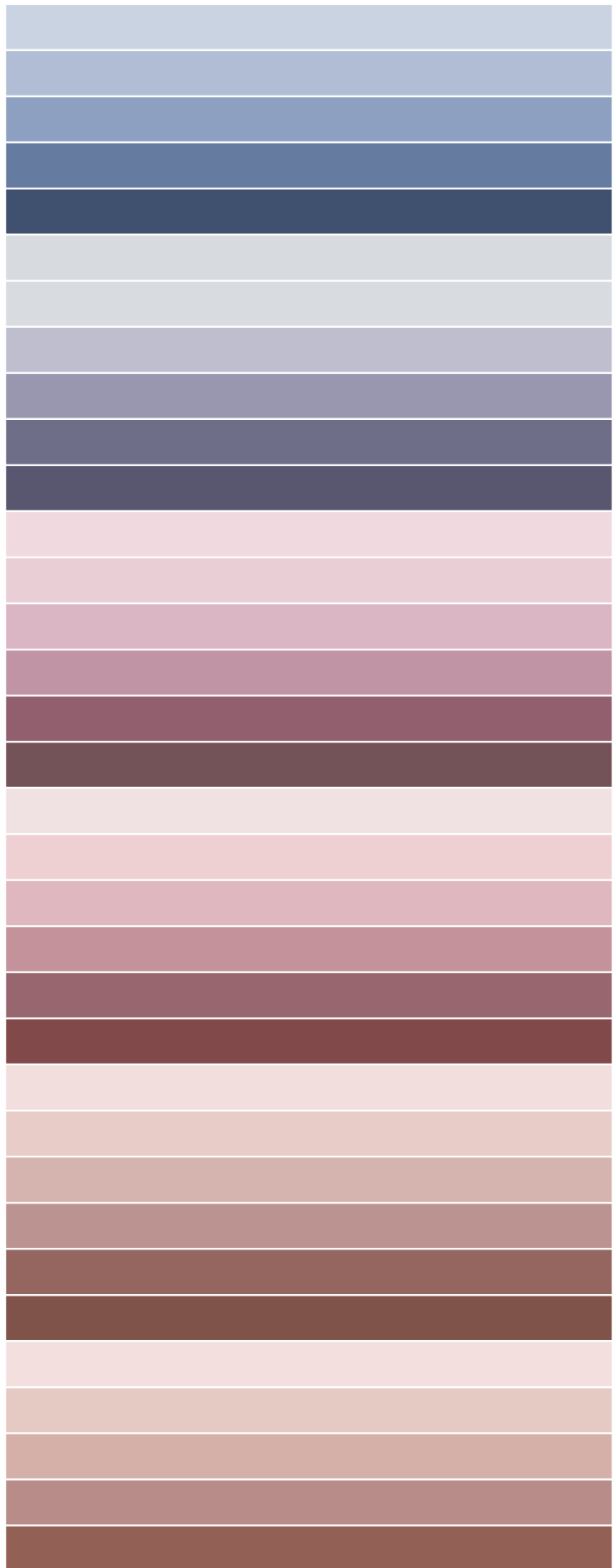
C26-F	M. LIGHT	D 5	16
C27-A	M. LIGHT	A 1	82
C27-B	M. LIGHT	A 1	76
C27-C	M. LIGHT	A 2	61
C27-D	M. LIGHT	C 5	41
C27-E	M. LIGHT	D 5	25
C27-F	M. LIGHT	D 5	15
C28-A	M. LIGHT	A 1	80
C28-B	M. LIGHT	A 1	73
C28-C	M. LIGHT	A 2	60
C28-D	M. LIGHT	B 4	43
C28-E	M. LIGHT	D 5	21
C28-F	M. LIGHT	D 5	13
C29-A	M. LIGHT	A 1	78
C29-B	M. LIGHT	A 3	70
C29-C	M. LIGHT	B 4	56
C29-D	M. LIGHT	C 5	40
C29-E	M. LIGHT	D 5	20
C29-F	M. LIGHT	D 5	12
C2-A	M. LIGHT	A •	69
C2-B	M. LIGHT	A •	62
C2-C	M. LIGHT	A •	44
C2-D	M. LIGHT	C •	28
C2-E	M. LIGHT	D •	17
C2-F	M. LIGHT	E •	7
C30-A	M. LIGHT	A 1	81
C30-B	M. LIGHT	A 3	70
C30-C	M. LIGHT	A 4	58
C30-D	M. LIGHT	B 5	40
C30-E	M. LIGHT	D 5	20
C30-F	M. LIGHT	D 5	12
C31-A	M. LIGHT	A 1	78
C31-B	M. LIGHT	A 2	68
C31-C	M. LIGHT	A 4	57



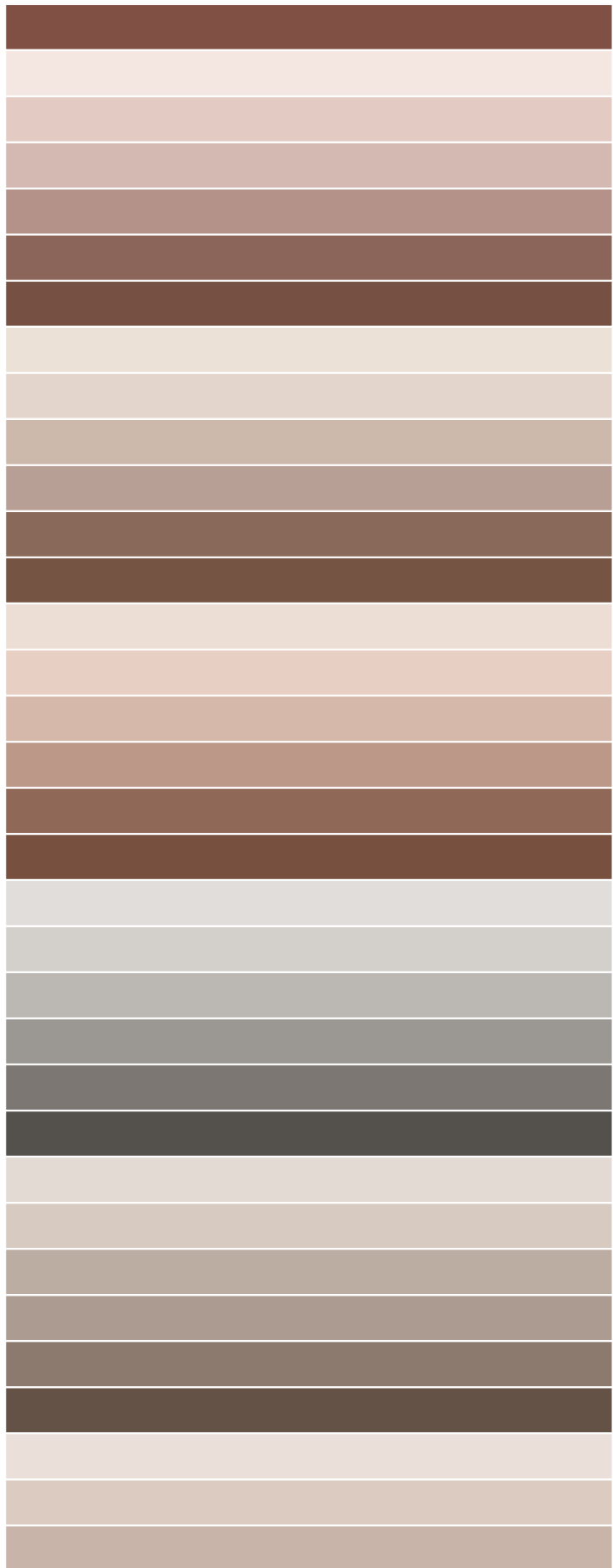
C31-D	M. LIGHT	B 5	34
C31-E	M. LIGHT	D 5	20
C31-F	M. LIGHT	D 5	14
C32-A	M. LIGHT	A 2	78
C32-B	M. LIGHT	A 4	61
C32-C	M. LIGHT	A 5	44
C32-D	M. LIGHT	B 5	29
C32-E	M. LIGHT	D 5	16
C32-F	M. LIGHT	D 5	8
C33-A	M. LIGHT	A 3	76
C33-B	M. LIGHT	A 4	62
C33-C	M. LIGHT	A •	49
C33-D	M. LIGHT	B •	33
C33-E	M. LIGHT	D •	19
C33-F	M. LIGHT	E 5	9
C34-A	M. LIGHT	A 3	74
C34-B	M. LIGHT	A 4	59
C34-C	M. LIGHT	A 5	47
C34-D	M. LIGHT	B 5	30
C34-E	M. LIGHT	E 5	12
C34-F	M. LIGHT	E 5	7
C35-A	M. LIGHT	A 2	74
C35-B	M. LIGHT	A 4	63
C35-C	M. LIGHT	A 5	49
C35-D	M. LIGHT	B 5	32
C35-E	M. LIGHT	C 5	19
C35-F	M. LIGHT	E •	8
C36-A	M. LIGHT	A 3	74
C36-B	M. LIGHT	A 4	61
C36-C	M. LIGHT	A •	49
C36-D	M. LIGHT	B •	32
C36-E	M. LIGHT	D •	19
C36-F	M. LIGHT	E •	8
C37-A	M. LIGHT	A 3	70



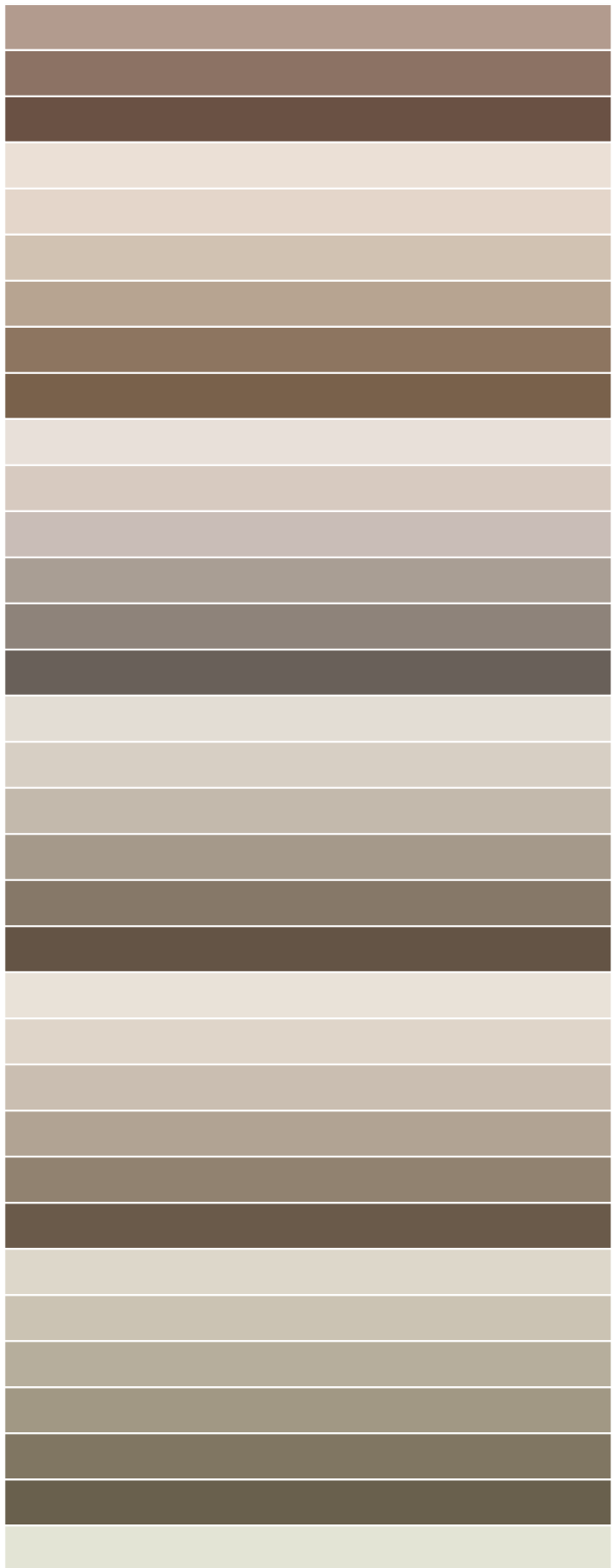
C37-B	M. LIGHT	A •	65
C37-C	M. LIGHT	A •	51
C37-D	M. LIGHT	B •	35
C37-E	M. LIGHT	C •	19
C37-F	M. LIGHT	E •	8
C38-A	M. LIGHT	A 2	70
C38-B	M. LIGHT	A •	71
C38-C	M. LIGHT	A •	52
C38-D	M. LIGHT	C •	32
C38-E	M. LIGHT	D •	16
C38-F	M. LIGHT	E •	10
C3-A	M. LIGHT	A •	74
C3-B	M. LIGHT	A •	66
C3-C	M. LIGHT	B •	52
C3-D	M. LIGHT	C •	35
C3-E	M. LIGHT	E •	15
C3-F	M. LIGHT	E •	10
C4-A	M. LIGHT	A •	78
C4-B	M. LIGHT	A •	68
C4-C	M. LIGHT	B •	53
C4-D	M. LIGHT	C •	34
C4-E	M. LIGHT	E •	17
C4-F	M. LIGHT	E •	10
C5-A	M. LIGHT	A 1	76
C5-B	M. LIGHT	A 1	64
C5-C	M. LIGHT	A 1	49
C5-D	M. LIGHT	B 5	34
C5-E	M. LIGHT	E 5	17
C5-F	M. LIGHT	E 5	11
C6-A	M. LIGHT	A 1	77
C6-B	M. LIGHT	A 1	63
C6-C	M. LIGHT	A 1	48
C6-D	M. LIGHT	B 2	31
C6-E	M. LIGHT	D 5	15



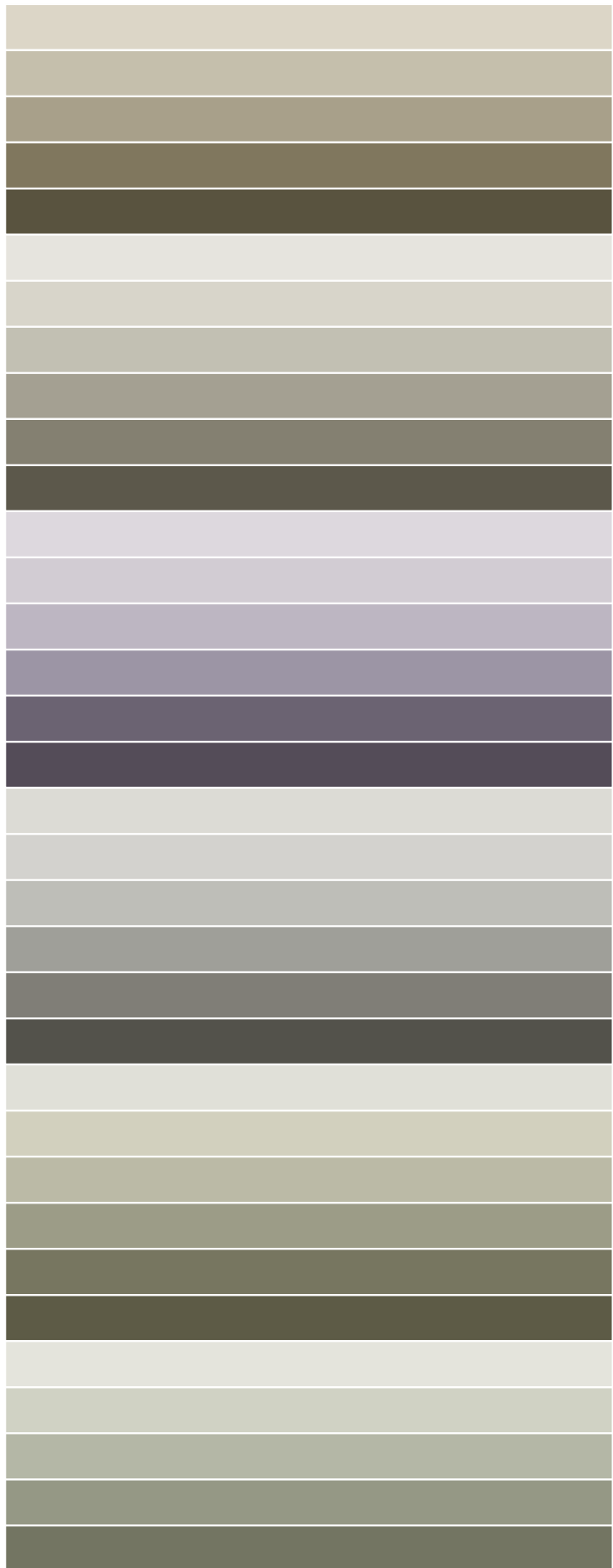
C6-F	M. LIGHT	D 5	11
C7-A	M. LIGHT	A 1	82
C7-B	M. LIGHT	A 1	63
C7-C	M. LIGHT	A 1	52
C7-D	M. LIGHT	B 2	32
C7-E	M. LIGHT	D 4	16
C7-F	M. LIGHT	D 4	10
C8-A	M. LIGHT	A 1	76
C8-B	M. LIGHT	A 1	68
C8-C	M. LIGHT	A 1	50
C8-D	M. LIGHT	B 3	37
C8-E	M. LIGHT	D 4	16
C8-F	M. LIGHT	D 4	11
C9-A	M. LIGHT	A 1	75
C9-B	M. LIGHT	A 1	66
C9-C	M. LIGHT	A 1	52
C9-D	M. LIGHT	B 3	35
C9-E	M. LIGHT	D 4	16
C9-F	M. LIGHT	D 4	10
D10-A	NATURAL	A 1	72
D10-B	NATURAL	A 1	63
D10-C	NATURAL	A 1	48
D10-D	NATURAL	A 2	31
D10-E	NATURAL	C 5	19
D10-F	NATURAL	D 4	8
D11-A	NATURAL	A 1	72
D11-B	NATURAL	A 1	60
D11-C	NATURAL	A 2	43
D11-D	NATURAL	B 2	34
D11-E	NATURAL	C 4	21
D11-F	NATURAL	D 4	9
D12-A	NATURAL	A 1	75
D12-B	NATURAL	A 1	62
D12-C	NATURAL	A 1	48



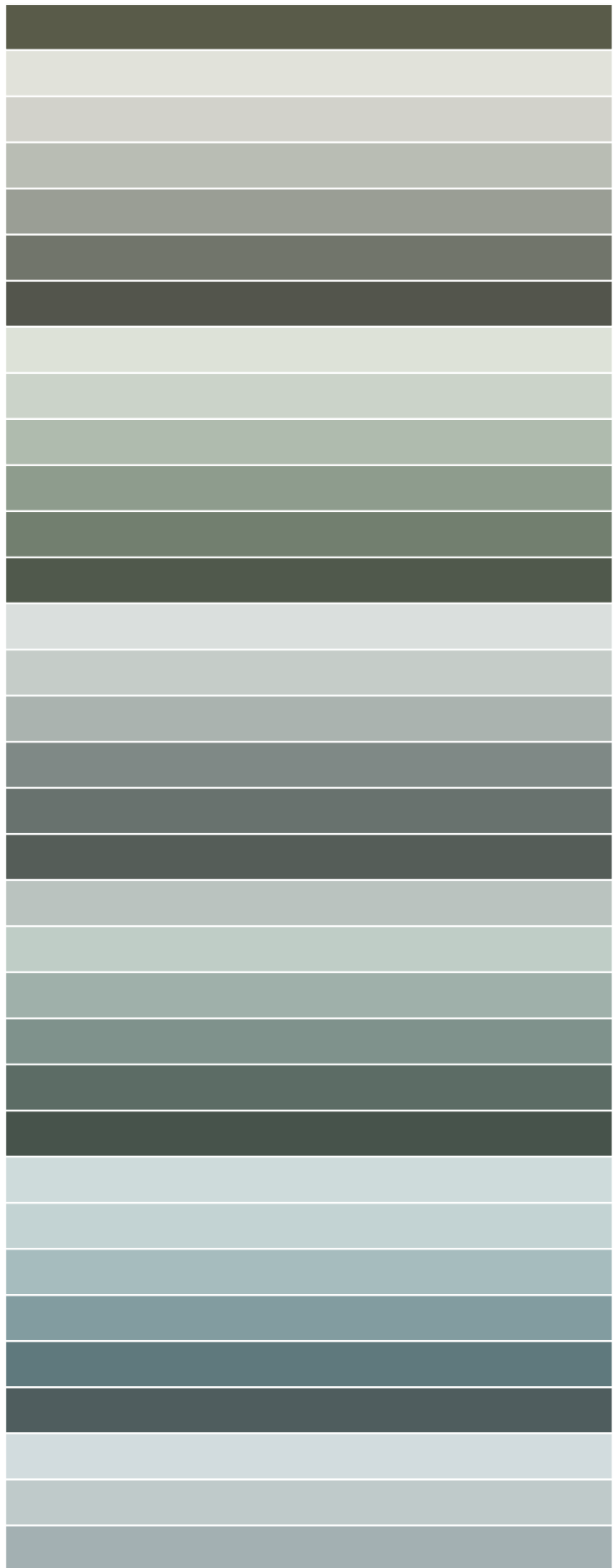
D12-D	NATURAL	B 2	35
D12-E	NATURAL	D 4	19
D12-F	NATURAL	D 4	9
D13-A	NATURAL	A 1	76
D13-B	NATURAL	A 1	69
D13-C	NATURAL	A 1	55
D13-D	NATURAL	B 2	39
D13-E	NATURAL	D 4	19
D13-F	NATURAL	D 4	13
D14-A	NATURAL	A 1	76
D14-B	NATURAL	A 1	60
D14-C	NATURAL	A 1	52
D14-D	NATURAL	B 2	35
D14-E	NATURAL	C 5	23
D14-F	NATURAL	D 4	12
D15-A	NATURAL	A 1	72
D15-B	NATURAL	A 1	63
D15-C	NATURAL	A 1	49
D15-D	NATURAL	B 3	33
D15-E	NATURAL	D 4	19
D15-F	NATURAL	D 4	10
D16-A	NATURAL	A 1	77
D16-B	NATURAL	A 1	67
D16-C	NATURAL	A 1	53
D16-D	NATURAL	B 2	38
D16-E	NATURAL	D 4	23
D16-F	NATURAL	D 4	11
D17-A	NATURAL	A 1	68
D17-B	NATURAL	A 1	55
D17-C	NATURAL	B 2	43
D17-D	NATURAL	C 3	32
D17-E	NATURAL	D 4	18
D17-F	NATURAL	D 4	12
D18-A	NATURAL	A 1	76



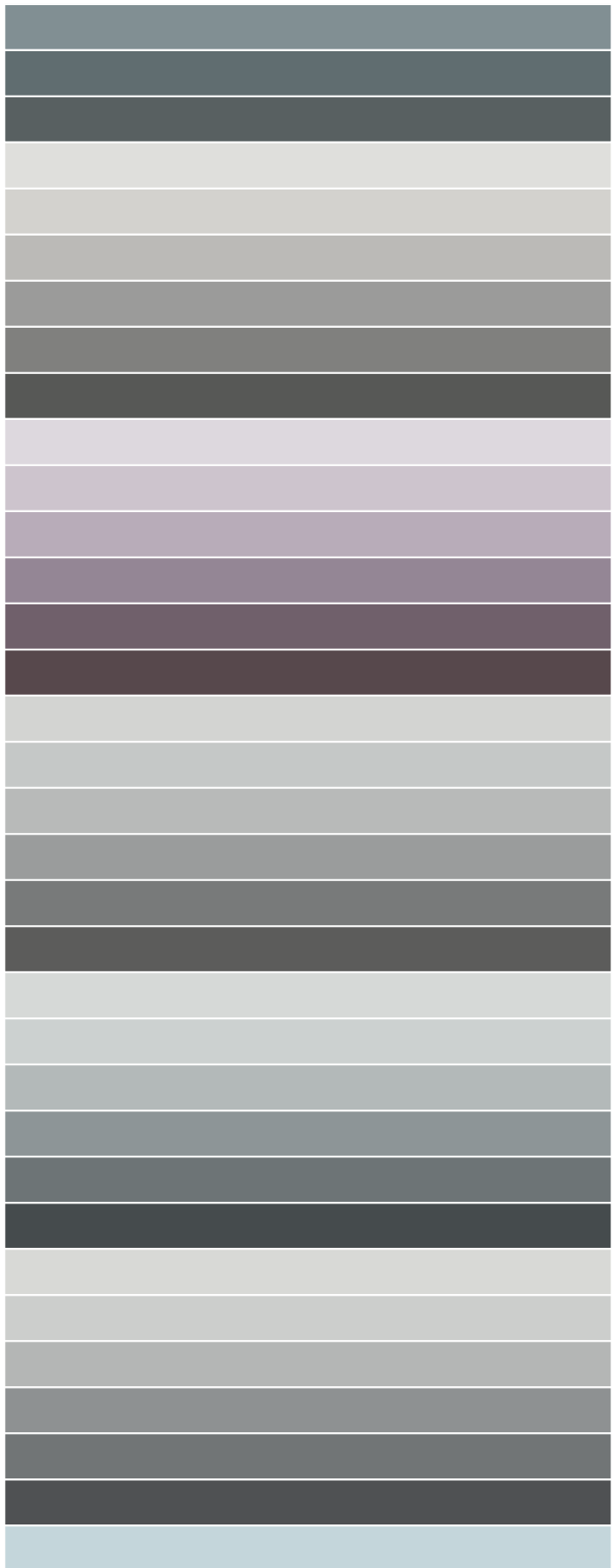
D18-B	NATURAL	A 1	68
D18-C	NATURAL	A 1	52
D18-D	NATURAL	B 3	36
D18-E	NATURAL	D 4	18
D18-F	NATURAL	D 4	9
D19-A	NATURAL	A 1	78
D19-B	NATURAL	A 1	66
D19-C	NATURAL	A 1	52
D19-D	NATURAL	B 2	35
D19-E	NATURAL	D 4	22
D19-F	NATURAL	D4	10
D1-A	NATURAL	A 2	70
D1-B	NATURAL	A •	62
D1-C	NATURAL	A •	48
D1-D	NATURAL	B •	31
D1-E	NATURAL	D •	13
D1-F	NATURAL	E •	8
D20-A	NATURAL	A 1	71
D20-B	NATURAL	A 1	64
D20-C	NATURAL	A 1	51
D20-D	NATURAL	A 2	34
D20-E	NATURAL	C 5	21
D20-F	NATURAL	D 4	8
D21-A	NATURAL	A 1	74
D21-B	NATURAL	A 1	63
D21-C	NATURAL	B 2	48
D21-D	NATURAL	C 4	33
D21-E	NATURAL	D 5	18
D21-F	NATURAL	D 5	10
D22-A	NATURAL	A 1	77
D22-B	NATURAL	A 1	63
D22-C	NATURAL	A 2	46
D22-D	NATURAL	C 4	31
D22-E	NATURAL	D 5	17



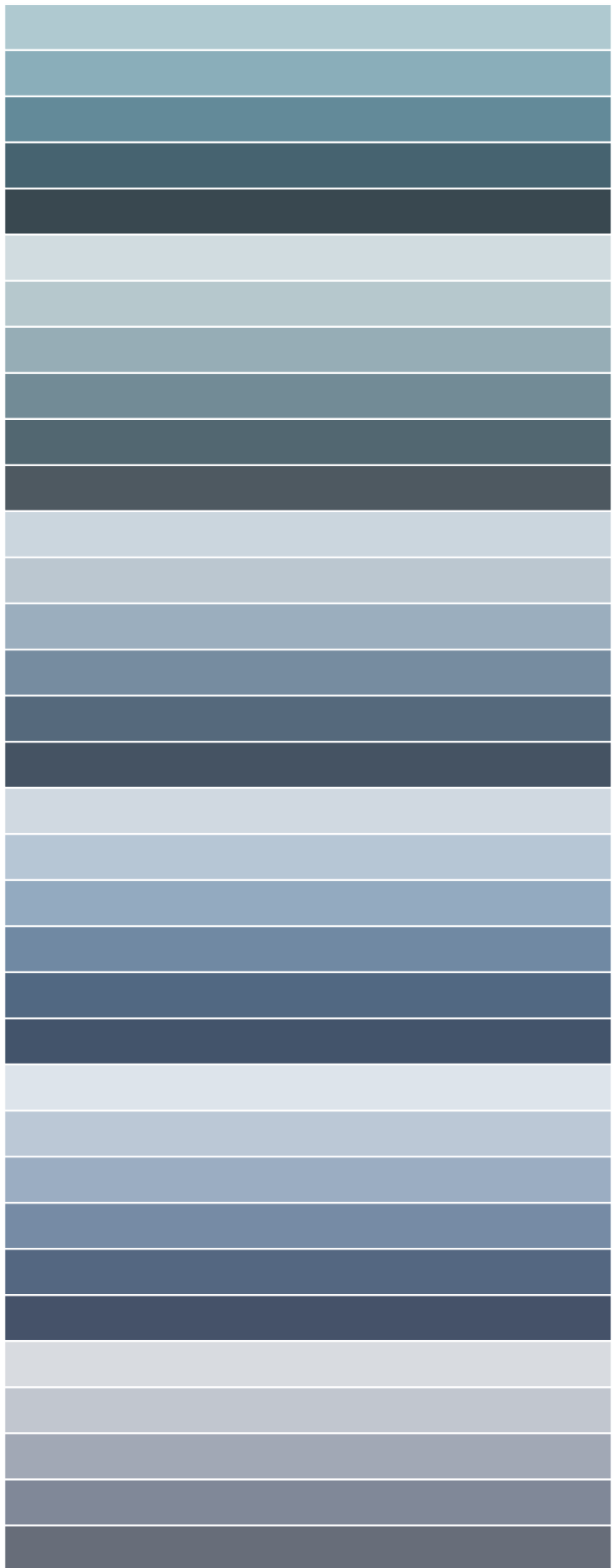
D22-F	NATURAL	D 5	10
D23-A	NATURAL	A 1	75
D23-B	NATURAL	A 1	64
D23-C	NATURAL	A 2	50
D23-D	NATURAL	A 3	33
D23-E	NATURAL	E 5	17
D23-F	NATURAL	D 5	9
D24-A	NATURAL	A 1	75
D24-B	NATURAL	A 1	64
D24-C	NATURAL	A 3	48
D24-D	NATURAL	B 5	31
D24-E	NATURAL	D 5	20
D24-F	NATURAL	D 5	9
D25-A	NATURAL	A 1	73
D25-B	NATURAL	A 1	59
D25-C	NATURAL	A 2	44
D25-D	NATURAL	B 4	24
D25-E	NATURAL	C 5	16
D25-F	NATURAL	D 5	10
D26-A	NATURAL	A 1	53
D26-B	NATURAL	A 3	59
D26-C	NATURAL	A 4	41
D26-D	NATURAL	B 5	27
D26-E	NATURAL	D 5	14
D26-F	NATURAL	D 5	8
D27-A	NATURAL	A 2	69
D27-B	NATURAL	A 3	63
D27-C	NATURAL	A 4	48
D27-D	NATURAL	A 5	31
D27-E	NATURAL	C 5	18
D27-F	NATURAL	E 5	10
D28-A	NATURAL	A 1	70
D28-B	NATURAL	A 3	57
D28-C	NATURAL	A 4	42



D28-D	NATURAL	B 5	26
D28-E	NATURAL	C 5	15
D28-F	NATURAL	C 5	11
D29-A	NATURAL	A 1	74
D29-B	NATURAL	A 1	64
D29-C	NATURAL	A 1	49
D29-D	NATURAL	B 2	33
D29-E	NATURAL	C 4	21
D29-F	NATURAL	D 4	10
D2-A	NATURAL	A •	70
D2-B	NATURAL	A •	57
D2-C	NATURAL	A •	43
D2-D	NATURAL	C •	26
D2-E	NATURAL	E •	13
D2-F	NATURAL	E 5	7
D30-A	NATURAL	A 1	66
D30-B	NATURAL	A 1	57
D30-C	NATURAL	A 1	49
D30-D	NATURAL	A 2	33
D30-E	NATURAL	B 4	19
D30-F	NATURAL	E 4	11
D31-A	NATURAL	A 1	69
D31-B	NATURAL	A 1	63
D31-C	NATURAL	A 1	48
D31-D	NATURAL	A 2	29
D31-E	NATURAL	B 5	17
D31-F	NATURAL	D 4	7
D32-A	NATURAL	A 1	69
D32-B	NATURAL	A 1	61
D32-C	NATURAL	A 1	47
D32-D	NATURAL	A 2	28
D32-E	NATURAL	B 4	17
D32-F	NATURAL	D 4	8
D33-A	NATURAL	A 3	65

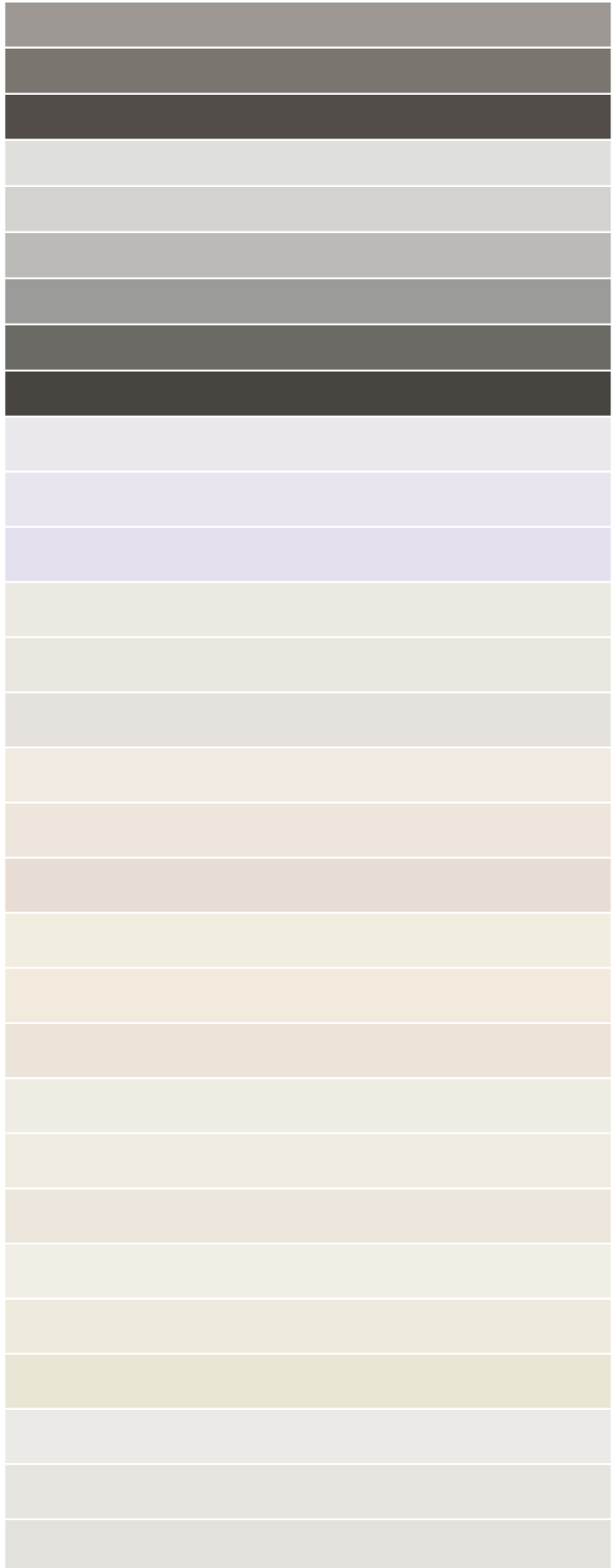


D33-B	NATURAL	A 4	55
D33-C	NATURAL	A 5	39
D33-D	NATURAL	C 5	23
D33-E	NATURAL	D 5	11
D33-F	NATURAL	E 5	6
D34-A	NATURAL	A 2	70
D34-B	NATURAL	A 3	56
D34-C	NATURAL	A 5	40
D34-D	NATURAL	B 5	24
D34-E	NATURAL	C 5	13
D34-F	NATURAL	E 5	10
D35-A	NATURAL	A 3	66
D35-B	NATURAL	A 4	56
D35-C	NATURAL	A 5	41
D35-D	NATURAL	B 5	25
D35-E	NATURAL	D •	13
D35-F	NATURAL	E •	8
D36-A	NATURAL	A 3	68
D36-B	NATURAL	A 4	55
D36-C	NATURAL	A 5	39
D36-D	NATURAL	C •	24
D36-E	NATURAL	D •	13
D36-F	NATURAL	E •	9
D37-A	NATURAL	A 2	77
D37-B	NATURAL	A 4	57
D37-C	NATURAL	A •	41
D37-D	NATURAL	C •	25
D37-E	NATURAL	D •	13
D37-F	NATURAL	E •	8
D38-A	NATURAL	A 3	70
D38-B	NATURAL	A 4	56
D38-C	NATURAL	A 5	39
D38-D	NATURAL	B 5	24
D38-E	NATURAL	C 5	15

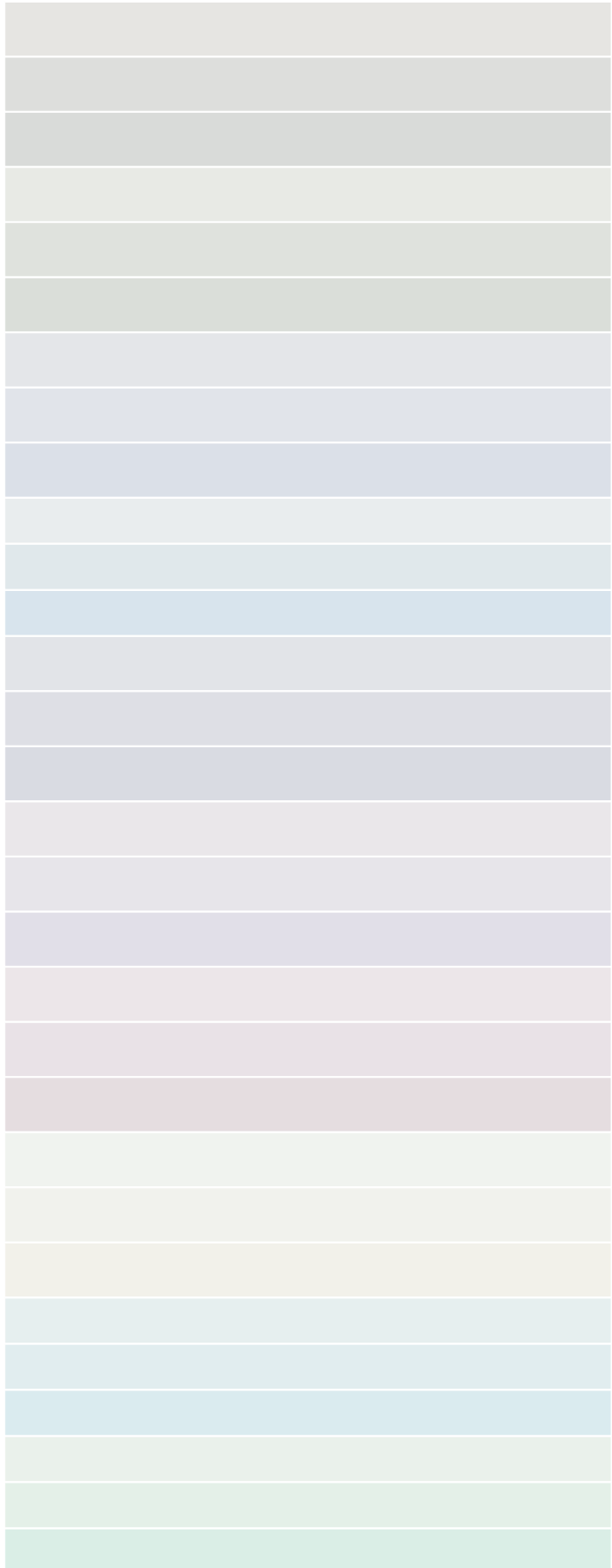


D38-F	NATURAL	E 5	8	
D3-A	NATURAL	A 1	76	
D3-B	NATURAL	A 1	63	
D3-C	NATURAL	A 4	49	
D3-D	NATURAL	B 5	33	
D3-E	NATURAL	D 5	14	
D3-F	NATURAL	E 5	8	
D4-A	NATURAL	A 1	71	
D4-B	NATURAL	A 1	60	
D4-C	NATURAL	A 1	45	
D4-D	NATURAL	B 2	30	
D4-E	NATURAL	C 4	15	
D4-F	NATURAL	D 4	8	
D5-A	NATURAL	A 1	73	
D5-B	NATURAL	A 1	67	
D5-C	NATURAL	B 1	52	
D5-D	NATURAL	B 2	35	
D5-E	NATURAL	C 4	18	
D5-F	NATURAL	D 4	9	
D6-A	NATURAL	A 1	75	
D6-B	NATURAL	A 1	60	
D6-C	NATURAL	A 1	49	
D6-D	NATURAL	B 2	33	
D6-E	NATURAL	D 4	17	
D6-F	NATURAL	D 4	9	
D7-A	NATURAL	A 1	72	
D7-B	NATURAL	A 1	59	
D7-C	NATURAL	A 1	46	
D7-D	NATURAL	B 3	31	
D7-E	NATURAL	C 4	18	
D7-F	NATURAL	D 4	9	
D8-A	NATURAL	A 1	75	
D8-B	NATURAL	A 1	63	
D8-C	NATURAL	A 1	49	

D8-D	NATURAL	B 2	32
D8-E	NATURAL	C 5	18
D8-F	NATURAL	D 4	8
D9-A	NATURAL	A 1	74
D9-B	NATURAL	A 1	64
D9-C	NATURAL	A 1	49
D9-D	NATURAL	B 2	33
D9-E	NATURAL	D 4	14
D9-F	NATURAL	D 4	6
OW10-A	SOFT	A 1	81
OW10-B	SOFT	A 1	80
OW10-C	SOFT	A •	76
OW11-A	SOFT	A 1	82
OW11-B	SOFT	A •	80
OW11-C	SOFT	A •	76
OW12-A	SOFT	A 1	83
OW12-B	SOFT	A 1	80
OW12-C	SOFT	A 1	74
OW13-A	SOFT	A 1	85
OW13-B	SOFT	A 1	83
OW13-C	SOFT	A 1	78
OW14-A	SOFT	A 1	84
OW14-B	SOFT	A 1	83
OW14-C	SOFT	A 1	79
OW15-A	SOFT	A 1	86
OW15-B	SOFT	A 1	83
OW15-C	SOFT	A 1	79
OW16-A	SOFT	A 1	82
OW16-B	SOFT	A 1	78
OW16-C	SOFT	A 1	75



OW17-A	SOFT	A 1	78
OW17-B	SOFT	A 1	73
OW17-C	SOFT	A 1	70
OW18-A	SOFT	A 1	82
OW18-B	SOFT	A 1	75
OW18-C	SOFT	A 1	72
OW19-A	SOFT	A 1	79
OW19-B	SOFT	A 1	78
OW19-C	SOFT	A 1	74
OW1-A	SOFT	A •	84
OW1-B	SOFT	A •	80
OW1-C	SOFT	A •	76
OW20-A	SOFT	A 1	77
OW20-B	SOFT	A 1	74
OW20-C	SOFT	A 2	71
OW21-A	SOFT	A 1	80
OW21-B	SOFT	A 2	79
OW21-C	SOFT	A 2	74
OW22-A	SOFT	A 1	80
OW22-B	SOFT	A 1	78
OW22-C	SOFT	A •	74
OW23-A	SOFT	A 1	89
OW23-B	SOFT	A •	88
OW23-C	SOFT	A 2	88
OW2-A	SOFT	A 1	85
OW2-B	SOFT	A 1	83
OW2-C	SOFT	A 2	80
OW3-A	SOFT	A 1	86
OW3-B	SOFT	A 1	85
OW3-C	SOFT	A 1	82



OW4-A	SOFT	A 1	86
OW4-B	SOFT	A 1	85
OW4-C	SOFT	A 2	83
OW5-A	SOFT	A 1	89
OW5-B	SOFT	A 1	87
OW5-C	SOFT	A 1	87
OW6-A	SOFT	A 1	87
OW6-B	SOFT	A 1	87
OW6-C	SOFT	A 1	85
OW7-A	SOFT	A 1	84
OW7-B	SOFT	A 1	85
OW7-C	SOFT	A 1	84
OW8-A	SOFT	A 1	83
OW8-B	SOFT	A 1	82
OW8-C	SOFT	A 1	81
OW9-A	SOFT	A 1	82
OW9-B	SOFT	A 1	80
OW9-C	SOFT	A 1	76

